

Thank you for visiting CarlonSales.com, part of the GrossAutomation.com family.

This document has been identified as being potentially out of date. It is therefore to be considered “for historical reference only” and not to be used for making current decisions.

Both Gross Automation, as the distribution channel, and Carlon, part of the Thomas & Betts family of ABB Installation Products, are happy to help you.

Gross Automation’s Global Sales

Department may be reached at +1 (262) 252-1600.

Carlon Technical support may be reached at +1 (888) 862-3289.

UL Listed Products

ARE CARLON STRUCTURED CABLE MANAGEMENT SYSTEMS UL LISTED?

Yes. Our new and innovative bracket, box, flexible raceway, and accessories product line has been tested and UL listed for low voltage structured cabling applications and especially designed for residential applications. Carlon Resi-Gard[®] has been tested to UL 2024 as a General Purpose Raceway. Refer to the brochure for specific UL file number information.

The National Electrical Code

IS RESI-GARD RECOGNIZED BY THE NATIONAL ELECTRICAL CODE[®] (NEC[®])?

Yes. For conductors within buildings NEC sections, [Article 770](#) (Optical Fiber Cables and Raceways) and [Article 800](#) (Communications Circuits), are relevant in particular when Resi-Gard products are being installed.

ARE THE DUAL VOLTAGE BOX/BRACKET AND DIVIDER USED IN SUPERBLUE BOXES ALLOWED PER THE NEC?

The 2002 National Electrical Code, per section [800-52 \(a\)\(1\)\(c\) Exception No.1](#), allows electrical conductors to share an outlet box when the conductors and communication cables are separated by a barrier within the box.



SC200DV




SCDIV

(Orange Divider in BH235A)

WHAT DOES THE NEC SAY ABOUT HOW FAR BACK AN ELECTRICAL BOX CAN BE FROM THE FINISHED SURFACE?

Per the 2002 National Electrical Code, [Section 314.20](#), "In walls or ceilings of concrete, tile, or other noncombustible material, boxes shall be installed so that the front edge of the box will not be set back of the finished surface more than 6 mm (1/4 in.). In walls and ceilings constructed of wood or other combustible surface material, boxes shall be flush with the finished surface or project therefrom." Therefore, use Adjust-A-Boxes and Brackets.

	Release Date:	01-21-03	Job Title:	Codes and Standards
	Contact Info:	25701 Science Park Drive * Cleveland, Ohio * 44122 1-800-3CARLON * www.carlon.com		Document No: SCMS954

Adjustable Brackets and Boxes



SC100ADJC



SC200ADJC



B121ADJ



B234ADJ

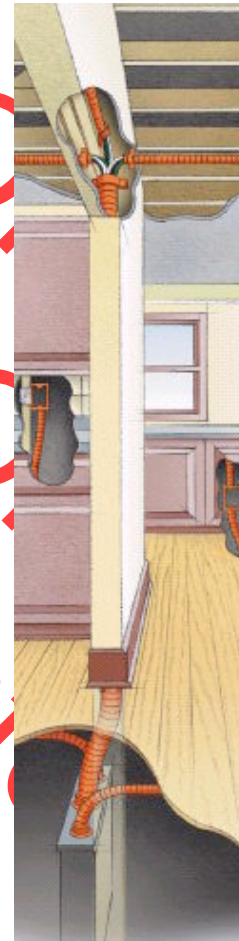
Fire-Rated Applications

International Building Code

If your low voltage device will be installed in a fire rated wall then you need a classified fire resistive enclosure for your device. Per the International Building Code a firewall is defined as a fire-resistive rated wall having protected openings that restricts the spread of fire and extends continuously from the foundation to or through the roof, with sufficient structural stability under fire conditions to allow collapse of construction on either side without collapse of the wall. A firewall is classified with a fire-resistive rating. A fire resistive rating is the period of time a building element, component, or assembly maintains the ability to confine a fire, continues to perform a given structural function, or both. Carlon's closed back boxes are classified for two hour or less fire resistive wall assemblies. Therefore, a closed back box should be used in these applications. Carlon recommends using our Carlon® SuperBlue™ line of products.

EIA/TIA-570-A

Even though you may run cable to each room in the house, changes will occur. Cabling standards will change. Homeowner technology requirements will change. Planning ahead for these changes is easy by installing Flexible Raceway. By installing raceways throughout the house will give you the opportunity to easily remove the outdated cable and replace it with new cable without tearing up the walls. Even EIA/TIA-570-A states, "Within buildings, consideration should be given to establishing spare pathway capacity for future media additions or modifications that would be difficult or impossible to cable."



 LAMSON & SESSIONS	Release Date:	01-21-03	Job Title:	Codes and Standards
	Contact Info:	25701 Science Park Drive * Cleveland, Ohio * 44122 1-800-3CARLON * www.carlon.com		Document No: SCMS954