

Carlton® High Density Polyethylene

*Telecommunication,
Electrical, and
Power Utility
Solutions:*

Smooth Wall



Ribbed Wall



UL Listed

Aerial

Aerial Figure 8

Corrugated



Toneable

Accessories

Carlton® High Density Polyethylene

Carlton® is a leading manufacturer of High Density Polyethylene (HDPE) pipe, duct, and conduit products used to house and protect fiber optic and metal cable in the Telecommunications, CATV, and Electric Power industries. Carlton offers the widest range of products to meet all your application and specification needs. Some of these products include Smoothwall, Ribbed Wall, Corrugated, Aerial, Figure-8 Aerial and UL Listed, in a full range of colors and sizes, with or without stripes as well as toneable and pre-lubricated duct. These products along with a full line of installation accessories are specifically designed to increase your productivity and profitability.

Carlton offers you the broadest line of innovative solutions for wire and cable management in the world! Our focus is on customer satisfaction, and providing you with quality products when and where you need them.

Contents

Smoothwall

Smoothwall HDPE..... 2 - 3

ID Ribbed Wall

ID Ribbed Wall HDPE 4 - 5

Toneable

Toneable HDPE 6 - 7

UL Listed

UL Listed HDPE 8 - 9

Aerial & Aerial Figure-8

Aerial HDPE.....10

Aerial Figure-8 HDPE.....11

Corrugated

Corrugated HDPE.....12 - 13

Specifications

General, Product Description and Resin Table.....14

Specifications.....14 - 15

Packaging Options, Truckload Quantities & Reel Charts

Packaging Options Reels, Coils.....16

Truckload Quantities Reels, Bundles.....17

Loading Reels.....17

Accessories

Couplings18 - 19

Duct Plugs, Split Plugs, Pulling Harness 20

Pulling Eyes, Swivels 21

Conduit Cutters, Fig. 8 Slitters, Warning Tape 22

End Caps, Rope, Tape 23

Return Policy & Request for Quote

Reel Return Policy 24

Quote Request 25

Smoothwall



Smoothwall HDPE is a nonmetallic flexible raceway manufactured from High Density Polyethylene (HDPE) for use in underground and innerduct applications.

Smoothwall offers superior protection, increases pathways of existing duct systems, allows extra channels for future cabling needs, and is ideal for jetting cable.

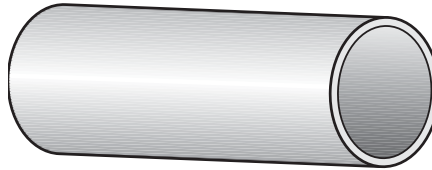
Available in a wide range of sizes, colors, and options, Carlon HDPE is the only cable management system you need.

Applications: Underground or innerduct

Installation methods: Plowing, open trench, directional boring or pulled through existing conduit

Smooth Interior Wall

Smoothwall is ideal for jetting cable



Smoothwall Options

- Sizes 1/2" - 16"
- Multiple colors and stripes
- Factory installed pull lines
- Sequentially marked footage
- Up to four colors of equal lengths paralleled or segmented on one reel
- Pre-lubricated
- Toneable Duct – copper conductor within the wall of duct. Used to locate buried conduit. (see page 6)



Directional Boring



Open Trench

Custom Orders

- * Custom Orders are not returnable
- * Custom lengths are available in minimum order quantities specified on page 25

How to Build a Part Number:

Product	Size	Type	Wall	Options	Splits	Color	Stripes	Tape	Length
A = HDPE	2 = 1/2" 3 = 3/4" 5 = 1" 6 = 1-1/4" 9 = 1-1/2" 13 = 2" 14 = 2-1/2" 15 = 3" 16 = 4" 17 = 4.75" 18 = 5" 22 = 6" 23 = 7" 24 = 8" 25 = 10" 26 = 12" 27 = 14" 28 = 16"	C = Smooth/Smooth	4 = SCH 40 5 = SCH 80 6 = SDR 11 9 = SDR 13.5 13 = SDR 15.5 14 = SDR 17 16 = SDR 21 22 = SDR 7 24 = SDR 9 26 = SDR 11.5 27 = SDR 11.5 True 29 = SDR 15 34 = SDR 7 36 = SDR 9 37 = SDR 9 True 42 = TC-7A 45 = True 11 46 = True 9	N = None D = Lube Duct	1 = 1 Way Single 2 = 2 Way Segmented 3 = 3 Way Segmented 4 = 4 Way Segmented 5 = 2 Way Parallel 6 = 3 Way Parallel 7 = 4 Way Parallel 12 = 2 Way Compart 13 = 3 Way Compart 14 = 4 Way Compart	A = Black B = Blue C = Brown D = Buff E = Gray F = Green G = Lilac H = Lt. Green J = Orange K = Red L = Terra Cotta M = White N = Yellow	NN = None 3A = Black Stripes 3B = Blue Stripes 3C = Brown Stripes 3D = Buff Stripes 3E = Gray Stripes 3F = Green Stripes 3G = Lilac Stripes 3H = Lt. Green Stripes 3J = Orange Stripes 3K = Red Stripes 3L = Terra Cotta Stripes 3M = White Stripes 3N = Yellow Stripes	A = Empty B = 1130 lbs. Polyester Tape C = 1250 lbs. Polyester Tape D = 1500 lbs. Polyester Tape E = 1800 lbs. Polyester Tape G = 200 lbs. Polyester Tape J = 2500 lbs. Polyester Tape K = 400 lbs. Detect. Polyester Tape T = 1250 lbs. Poly Metric Tape V = 1250 lbs. Detectable 22G Poly Tape	1500 (Equals 1500 Feet)

Standard Length – Reels and Coils

	Color	Part No.	Type	Wall	Pull Tape Polyester Woven	Reel Size	Reel Length (ft.)	Wt./Ea. (lbs.)
1"	Orange	A5C6N1JNNA7000	S/S	SDR 11	Empty	72x45x24	7000	1517
	Orange	A5C6N1JNNB7000	S/S	SDR 11	1130 lb.	72x45x24	7000	1576
	Orange	A5C9N1JNNB250	S/S	SDR 13.5	1130 lb.	Coil	250	42
	Orange	A5C9N1JNNB500	S/S	SDR 13.5	1130 lb.	Coil	500	84
	Orange	A5C9N1JNNB1800	S/S	SDR 13.5	1130 lb.	48x30x24	1800	382
	Orange	A5C9N1JNNA7000	S/S	SDR 13.5	Empty	72x45x24	7000	1278
	Orange	A5C9N1JNNB7000	S/S	SDR 13.5	1130 lb.	72x45x24	7000	1337
1 1/4"	Orange	A6C6N1JNNA5000	S/S	SDR 11	Empty	82x45x30	5000	1742
	Orange	A6C6N1JNNB5000	S/S	SDR 11	1130 lb.	82x45x30	5000	1784
	Orange	A6C9N1JNNB250	S/S	SDR 13.5	1130 lb.	Coil	250	66
	Orange	A6C9N1JNNB500	S/S	SDR 13.5	1130 lb.	Coil	500	132
	Orange	A6C9N1JNNC2500	S/S	SDR 13.5	1250 lb.	66x45x30	2500	793
	Orange	A6C9N1JNNA5000	S/S	SDR 13.5	Empty	82x45x30	5000	1481
	Orange	A6C9N1JNNB5000	S/S	SDR 13.5	1130 lb.	82x45x30	5000	1523
	Orange	A6C9N1JNNA8000	S/S	SDR 13.5	Empty	96x45x32	8000	2271
	Orange	A6C9N1JNNB8000	S/S	SDR 13.5	1130 lb.	96x45x32	8000	2338
	Orange	A9C6N1JNNA5000	S/S	SDR 11	Empty	96x45x32	5000	2246
1 1/2"	Orange	A9C9N1JNNA5000	S/S	SDR 13.5	Empty	96x45x32	5000	1904
	Orange	A9C9N1JNNB5000	S/S	SDR 13.5	1130 lb.	96x45x32	5000	1946
	Orange	A9C26N1JNNC2500	S/S	SIDR 11.5	1250 lb.	66x45x30	2500	1190

Standard Length – Reels and Coils

	Color	Part No.	Type	Wall	Pull Tape Polyester Woven	Reel Size	Reel Length (ft.)	Wt./Ea. (lbs.)
2"	Orange	A13C4N1JNNC2500	S/S	Sch 40	1250 lb.	82x45x40	2500	1410
	T Cotta	A13C5N1LNNC2500	S/S	Sch 80	1250 lb.	82x45x40	2500	1816
	Grey	A13C6N1ENNA4000	S/S	SDR 11	Empty	96x45x32	4000	2747
	Black	A13C6N1ANNA4000	S/S	SDR 11	Empty	96x45x32	4000	2747
	Orange	A13C6N1JNNA4000	S/S	SDR 11	Empty	96x45x32	4000	2747
	Black 3 RD	A13C9N1A3KA4000	S/S	SDR 13.5	Empty	96x45x32	4000	2319
	Black	A13C9N1ANNA4000	S/S	SDR 13.5	Empty	96x45x32	4000	2319
3"	Orange	A13C9N1JNNA4000	S/S	SDR 13.5	Empty	96x45x32	4000	2319
	Black	A15C9N1ANNA1000	S/S	SDR 13.5	Empty	96x45x68	1000	1364
4"	Orange	A15C9N1JNNA1000	S/S	SDR 13.5	Empty	96x45x68	1000	1364
	Black	A16C6N1ANNA766	S/S	SDR 11	Empty	102x45x68	766	2022
4 3/4"	Orange	A16C6N1JNNA766	S/S	SDR 11	Empty	102x45x68	766	2022
	Black	A16C9N1ANNA766	S/S	SDR 13.5	Empty	102x45x68	766	1727
5"	Orange	A16C9N1JNNA766	S/S	SDR 13.5	Empty	102x45x68	766	1727
	Orange	A16C26N1JNNC700	S/S	SIDR 11.5	1250 lb.	102x45x68	700	1746
6"	Grey	A17C9N1ENNA700	S/S	SDR 13.5	Empty	102x45x68	700	2171
	Orange	A17C9N1JNNA700	S/S	SDR 13.5	Empty	102x45x68	700	2171
5"	Grey	A18C9N1ENNA480	S/S	SDR 13.5	Empty	114x45x85	480	1842
	Black	A18C9N1ANNA480	S/S	SDR 13.5	Empty	114x45x85	480	1842
6"	Grey	A22C9N1ENNA450	S/S	SDR 13.5	Empty	120x45x85	450	2296
	Black	A22C6N1ANNA450	S/S	SDR 11	Empty	120x45x85	450	2669
	Black	A22C9N1ANNA450	S/S	SDR 13.5	Empty	120x45x85	450	2296

ID Ribbed Wall



ID Ribbed Wall HDPE is a non-metallic flexible raceway manufactured from High Density Polyethylene (HDPE) for use in underground and innerduct applications.

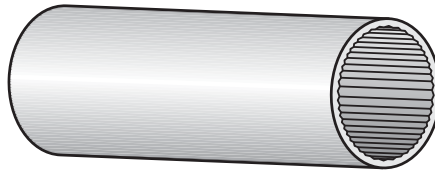
Ribbed Wall offers superior protection, increases pathways of existing duct systems, allowing extra channels for future cabling needs. Available in a wide range of sizes, colors, and options, Carlon HDPE is the only cable management system you need.

Applications: Underground or innerduct

Installation methods: Plowing, open trench, directional boring or pulled through existing conduit

ID Ribbed Interior Wall

Ribbed Wall is ideal for pulling or jetting cable. Interior ribs reduce surface contact with cable during installation.



Ribbed Wall Options

- Sizes 1/2" - 6"
- Multiple colors and stripes
- Factory installed pull lines
- Sequentially marked footage
- Up to four colors of equal lengths paralleled or segmented on one reel
- Pre-lubricated
- Toneable Duct – copper conductor within the wall of duct. Used to locate buried conduit. (see page 6)



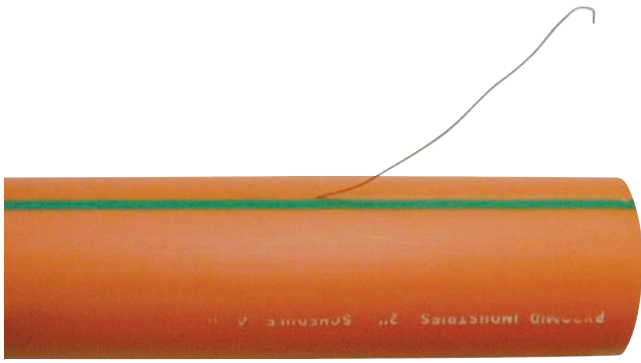
Trenching

Custom Orders

- * Custom Orders are not returnable
- * Custom lengths are available in minimum order quantities specified on page 25

How to Build a Part Number:

Product	Size	Type	Wall	Options	Splits	Color	Stripes	Tape	Length
A = HDPE	2 = 1/2"	B = Smooth Out/Ribbed In	4 = SCH 40	N = None	1 = 1 Way Single	A = Black	NN = None	A = Empty	1500
	3 = 3/4"		5 = SCH 80	D = Lube Duct	2 = 2 Way Segmented	B = Blue	3A = Black Stripes	B = 1130 lbs. Polyester Tape	(Equals 1500 Feet)
	5 = 1"		6 = SDR 11	3 = 3 Way Segmented	C = Brown	3B = Blue Stripes	C = 1250 lbs. Polyester Tape		
	6 = 1-1/4"		9 = SDR 13.5	4 = 4 Way Segmented	D = Buff	3C = Brown Stripes	D = 1500 lbs. Polyester Tape		
	9 = 1-1/2"		13 = SDR 15.5	5 = 2 Way Parallel	E = Gray	3D = Buff Stripes	E = 1800 lbs. Polyester Tape		
	13 = 2"		14 = SDR 17	6 = 3 Way Parallel	F = Green	3E = Gray Stripes	G = 200 lbs. Polyester Tape		
	14 = 2-1/2"		16 = SDR 21	7 = 4 Way Parallel	G = Lilac	3F = Green Stripes	J = 2500 lbs. Polyester Tape		
	15 = 3"		22 = SDR 7	12 = 2 Way Compart	H = Lt. Green	3G = Lilac Stripes	K = 400 lbs. Detect Polyester Tape		
	16 = 4"		24 = SDR 9	13 = 3 Way Compart	J = Orange	3H = Lt. Green Stripes	T = 1250 lbs. Poly Metric Tape		
	17 = 4.75"		26 = SIDR 11.5	14 = 4 Way Compart	K = Red	3J = Orange Stripes	V = 1250 lbs. Detectable 22G Poly Tape		
	18 = 5"		27 = SIDR 11.5 True		L = Terra Cotta	3K = Red Stripes			
	22 = 6"		29 = SIDR 15		M = White	3L = Terra Cotta Stripes			
			34 = SIDR 7		N = Yellow	3M = White Stripes			
			36 = SIDR 9			3N = Yellow Stripes			
			37 = SIDR 9 True						
			42 = TC-7A						
			45 = True 11						
	46 = True 9								



Application: Underground

Installation methods: Direct bury, directional boring, or trench

Toneable HDPE Duct incorporates a patented design using bare solid copper conductor wire within the duct wall underneath a LDPE or HDPE stripe providing easy access to the conductor wire for grounding and coupling applications.

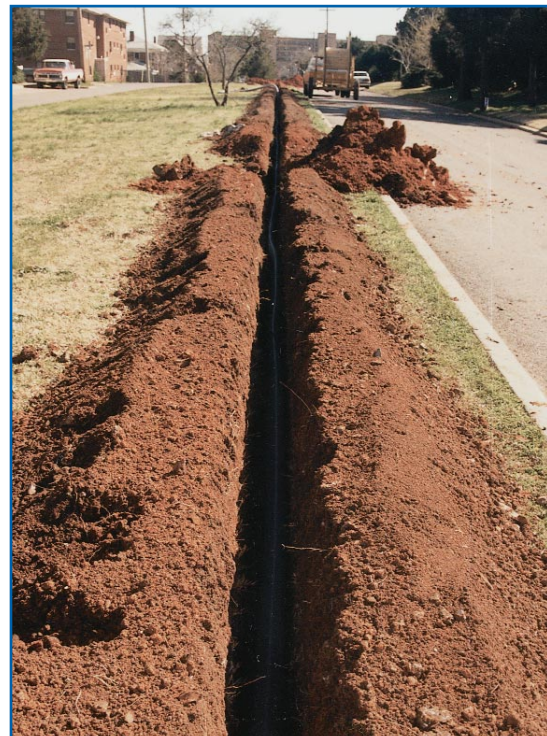
Allows detectability and toning isolation of empty duct structures as well as ducts with dielectric fiber installations using conventional transmission, receiving, and locating equipment.

Standard metal and nonmetallic coupling methods allow conduit detectability and non-metallic toneable pressure couplings allow detection/toning isolation of conduit.

Complete system of conduit and couplings provides the solution to finding buried occupied or non-occupied conduits.

Toneable Options

- Industry standard conduit sizes 1"– 2"
- Solid bare copper tone wire
- Use Conventional locating devices
- Tone wire easily accessible for coupling and grounding
- Standard/compression couplings available (page 19)
- Allows isolation tone and/or detection
- Suitable for direct bury, bore, trench applications
- Single color stripe option



Open Trench

Specifications

Conductor Data

AWG	# 18 Solid Bare Copper	#22 Solid Bare Copper
Resistivity	6.39 OHMS per 1,000 ft.	16.2 OHMS per 1,000 ft.
Elongation	10% min.	32% min.

Custom Orders

- * Custom Orders are not returnable
- * Custom reel lengths are available in minimum order quantities of 25,000 ft. or min. set up charge

How to Build a Part Number:

Product	Size	Type	Wall	Options	Splits	Color	Stripe (one)	Tape	Length
A = HDPE	5 = 1"	B = Smooth Out/	4 = SCH 40	J = Toneable/18G	1 = 1 Way Single	A = Black	NN = None	A = Empty	1500
	6 = 1-1/4"	Ribbed In	5 = SCH 80	1 1/2" - 2"	2 = 2 Way Segmented	B = Blue	1A = Black Stripe	B = 1130 lbs.	(Equals 1500 Feet)
	9 = 1-1/2"	C = Smooth/	6 = SDR 11	G = Toneable/22G	3 = 3 Way Segmented	C = Brown	1B = Blue Stripe	Polyester Tape	
	13 = 2"	Smooth	9 = SDR 13.5	1" - 1 1/4"	4 = 4 Way Segmented	D = Buff	1C = Brown Stripe	C = 1250 lbs.	
					5 = 2 Way Parallel	E = Gray	1D = Buff Stripe	Polyester Tape	
					6 = 3 Way Parallel	F = Green	1E = Gray Stripe	D = 1500 lbs.	
					7 = 4 Way Parallel	G = Lilac	1F = Green Stripe	Polyester Tape	
					12 = 2 Way Compart	H = Lt. Green	1G = Lilac Stripe	E = 1800 lbs.	
					13 = 3 Way Compart	J = Orange	1H = Lt. Green Stripe	Polyester Tape	
					14 = 4 Way Compart	K = Red	1J = Orange Stripe	G = 200 lbs.	
						L = Terra Cotta	1K = Red Stripe	Polyester Tape	
						M = White	1L = Terra Cotta Stripe	J = 2500 lbs.	
						N = Yellow	1M = White Stripe	Polyester Tape	
							1N = Yellow Stripe	T = 1250 lbs. Poly Metric Tape	



UL Listed HDPE is a nonmetallic flexible raceway manufactured from High Density Polyethylene (HDPE), offering a protective pathway for cables and wires, and is used in underground or innerduct applications.

UL Listed HDPE conduit is compliant with the 2002 NEC Articles 300 and 352, and is listed to UL 651B. Its high tensile strength-to-weight ratio, superior crush resistance, and low coefficient of friction when installing cable makes it ideal for directional boring.

Applications: Underground or innerduct. Ideal for use in parking lots, traffic lights, etc.

Installation methods: Plowing, open trench, directional boring or pulled through existing conduit

UL Listed Options

- Sizes 1" – 4"
- Wall types:
 - EPEC 40 (Schedule 40) 1" – 4"
 - EPEC 80 (Schedule 80) 2" – 4"
 - EPEC-B (SDR 13.5) 2" – 4"
- Multiple colors and stripes
- Sequentially marked footage
- Available in smoothwall only
- Available with pre-installed conductors as nonmetallic underground conduit with conductors (NUCC) per Article 354 of the 2002 NEC, UL File 195593.
- Conforms to NEMA TC-7 Smoothwall Coilable PE Electrical Plastic Conduit



Directional Boring

Custom Orders

- * Custom Orders are not returnable
- * Custom lengths are available in minimum order quantities specified on page 25

How to Build a Part Number:

Product	Size	Type	Wall	Options	Splits	Color	Stripes	Tape	Length
U = UL Listed	5 = 1"	C = Smooth/Smooth	4 = SCH 40	N = None D = Lube Duct	1 = 1 Way Single	A = Black	NN = None	A = EMPTY B = 1130 lbs. Polyester Tape C = 1250 lbs. Polyester Tape D = 1500 lbs. Polyester Tape E = 1800 lbs. Polyester Tape G = 200 lbs. Polyester Tape J = 2500 lbs. Polyester Tape K = 400 lbs. Detect Polyester Tape T = 1250 lbs. Poly Metric Tape V = 1250 lbs. Detectable 22G Poly Tape	1500 (Equals 1500 Feet)
	6 = 1-1/4"		1" - 4"		2 = 2 Way Segmented	B = Blue	3A = Black Stripes		
	9 = 1-1/2"		5 = SCH 80		3 = 3 Way Segmented	C = Brown	3B = Blue Stripes		
	13 = 2"		2" - 4"		4 = 4 Way Segmented	D = Buff	3C = Brown Stripes		
	15 = 3"		9 = SDR 13.5		5 = 2 Way Parallel	E = Gray	3D = Buff Stripes		
	16 = 4"		2" - 4"		6 = 3 Way Parallel	F = Green	3E = Gray Stripes		
	7 = 4 Way Parallel		G = Lilac		3F = Green Stripes				
	12 = 2 Way Compant		H = Lt. Green		3G = Lilac Stripes				
	13 = 3 Way Compant		J = Orange		3H = Lt. Green Stripes				
	14 = 4 Way Compant		K = Red		3J = Orange Stripes				
	L = Terra Cotta		3K = Red Stripes						
	M = White		3L = Terra Cotta Stripes						
	N = Yellow		3M = White Stripes						
	3N = Yellow Stripes								

Standard Length – Reels and Coils

	Color	Part No.	Type	Wall	Pull Tape Polyester Woven	Reel Size	Reel/Coil Length (ft.)	Wt./E a (lbs.)
1"	Grey	U5C4N1ENNB250	S/S	Sch 40	1130 lb.	Coil	250	53
	Grey	U5C4N1ENNB500	S/S	Sch 40	1130 lb.	Coil	500	106
	Grey	U5C4N1ENNB1800	S/S	Sch 40	1130 lb.	48 x 30 x 24	1800	461
	Grey	U5C4N1ENNB7000	S/S	Sch 40	1130 lb.	72 x 45 x 24	7000	1647
1 1/4"	Grey	U6C4N1ENNB250	S/S	Sch 40	1130 lb.	Coil	250	72
	Grey	U6C4N1ENNB500	S/S	Sch 40	1130 lb.	Coil	500	143
	Grey	U6C4N1ENNB1400	S/S	Sch 40	1130 lb.	48 x 45 x 30	1400	401
	Grey	U6C4N1ENNB5000	S/S	Sch 40	1130 lb.	82 x 45 x 30	5000	1641
1 1/2"	Grey	U9C4N1ENNB5000	S/S	Sch 40	1130 lb.	96 x 45 x 30	5000	1948
2"	Grey	U13C6N1ENNA4000	S/S	SDR 13.5	Empty	96 x 45 x 32	4000	2319
3"	Grey	U15C9N1ENNA1000	S/S	SDR 13.5	Empty	96 x 45 x 68	1000	1364
4"	Grey	U16C9N1ENNA766	S/S	SDR 13.5	Empty	102 x 45 x 68	766	1727
	Grey	U16C9N1ENNA1000	S/S	SDR 13.5	Empty	114 x 45 x 68	1000	2193



Aerial HDPE is a nonmetallic flexible raceway manufactured from High Density Polyethylene (HDPE) with a carbon black additive to provide U.V. protection in aerial environments.

Aerial duct offers superior cable protection against damage caused by rodents, projectile objects such as rocks and gun pellets, and harsh weather conditions. And because of its strength and durability, it can withstand the expansion and contraction caused by seasonal weather changes.

Applications: Aerial environments. Used when rocky terrain makes buried duct difficult, or in plant/campus environments expecting frequent changes.

Installation method: Designed to be lashed to existing support strands.

- HDPE: ASTM 1248 Type III Grade P34 Category 5 Class C
- Ultraviolet: Minimum 2% carbon black

Aerial Options

- Sizes 1" – 2"
- Wall Type: SDR 13.5 and SDR 11
- Factory installed tape
- Solidwall or corrugated
- Pre-lubricated
- Sequentially marked footage



Aerial Lashing: Aerial Duct is lashed to existing cable support wire using cable lashing equipment.

Custom Orders

- * Custom Orders are not returnable
- * Custom lengths are available in minimum order quantities specified on page 25

How to Build a Part Number:

Product	Size	Type	Wall	Options	Splits	Color	Stripes	Tape	Length
E = Aerial	5 = 1" 6 = 1-1/4" 9 = 1-1/2" 13 = 2"	B = Smooth Out/Ribbed In C = Smooth/Smooth D = Corrugated	2 = None - Corr 6 = SDR 11 9 = SDR 13.5	N = None D = Lube Duct	1 = 1 Way Single 2 = 2 Way Partitioned 3 = 3 Way Partitioned 4 = 4 Way Partitioned 5 = 2 Way Parallel 6 = 3 Way Parallel 7 = 4 Way Parallel	A = Black	NN = None	A = Empty B = 1130 lbs. Polyester Tape C = 1250 lbs. Polyester Tape D = 1500 lbs. Polyester Tape E = 1800 lbs. Polyester Tape J = 2500 lbs. Polyester Tape T = 1250 lbs. Poly Metric Tape	1500 (Equals 1500 Feet)



Strand

- 6.6M 1/4" Extra high strength strand
Class A galvanized with flooding compound
- 10.0M 3/8" Extra high strength strand
Class A galvanized with flooding compound

Applications: Aerial environments. Used when rocky terrain makes buried duct difficult, or in plant/campus environments expecting frequent changes.

Installation method: designed for pole-to-pole attachments

HDPE Aerial Figure-8 is a nonmetallic flexible raceway with a Class A galvanized support strand. It's manufactured from High Density Polyethylene (HDPE), which contains a carbon black additive to provide U.V. protection in aerial environments.

Figure-8 duct offers superior cable protection against damage caused by rodents, projectile objects such as rocks and gun pellets, and harsh weather conditions with a one-step installation process. And because of its strength and durability, it can withstand the expansion and contraction caused by seasonal weather changes.

- HDPE: ASTM 1248 Type III
Grade P34
Category 5 Class C
- Ultraviolet: Minimum 2% carbon black
- Product Weight:

6.6M Figure 8	.429 lbs/ft
10.0M Figure 8	.507 lbs/ft

Aerial Figure-8 Options

- Size 1 1/4"
- Wall Type: SIDR 9 True
- 6.6M or 10.0M strands
- Factory installed tape
- Pre-installed Cable-In-Conduit
- Ribbed or smooth interior walls
- Pre-lubricated
- Sequentially marked footage



Aerial Hanging: Figure-8 Duct has a choice of two integrated mounting strands that attach directly to poles using 3-bolt mounting clamps, and Carlon stripping/cutting tools.

Custom Orders

- * Custom Orders are not returnable
- * Custom lengths are available in minimum order quantities of 1000 ft. or min. set up charge

How to Build a Part Number:

Product	Size	Type	Wall	Options	Splits	Color	Stripes	Tape	Length
S = Figure 8 - 6.6mm T = Figure 8 - 10mm	6 = 1-1/4"	B = Smooth Out/Ribbed In C = Smooth/Smooth	37 = SIDR 9 True	N = None D = Lube Duct	1 = 1 Way Single	A = Black	NN = None	A = Empty B = 1130 lbs. Polyester Tape C = 1250 lbs. Polyester Tape D = 1500 lbs. Polyester Tape E = 1800 lbs. Polyester Tape J = 2500 lbs. Polyester Tape T = 1250 lbs. Poly Metric Tape	2500 (Equals 2500 Feet)

NOTE: Standard Lengths 2500 ft. and 5000 ft.

Corrugated



Corrugated HDPE is manufactured from High Density Polyethylene (HDPE) and is intended for innerduct applications. It's ideal for pulls under 1000 ft. and is designed to reduce surface contact when pulling cable. And because this product is lightweight and offers maximum flexibility, installation in small or restricted locations is made easier.

HDPE corrugated duct is available in sizes 1" through 2" and is offered in a variety of colors. Custom options are also available to satisfy the requirements of most installations.

Applications: Innerducts

Installation method: Pulled through existing conduit.

Specifications

Storage: -20°F – 158°F

Handling: -20°F – 104°F

Nom. Size	Nom. ID	Nom. OD	Min. Wall	Wt/ 100 Ft.	Stiffness (5%) lb/in/in	Min Bend Radius	Pull Tensile
1"	1.049	1.340	.035	10.6	65	14"	261 lbs.
1-1/4"	1.250	1.565	.035	11.2	108	5"	319 lbs.
1-1/2"	1.500	1.825	.035	18.0	83	6"	384 lbs.
2"	2.000	2.425	.035	20.8	70	5-1/2"	493 lbs.



Pulled through existing conduits

Standard Length – Reels

	Color	Part No.	Nom. I.D.	Nom. O.D.	Pull Tape	Reel Size	Reel Length (ft.)	Wt. per 100 ft. (lbs.)
1"	Orange	A5D2S1JNNB1000	1.049	1.340	1130 lb.	48-30-24	1000	12.5
	Orange	A5D2S1JNNB1800	1.049	1.340	1130 lb.	48-30-24	1800	12.5
	Orange	A5D2S1JNNB2000	1.049	1.340	1130 lb.	48-41-24	2000	12.5
	Orange	A5D2S1JNNB2700	1.049	1.340	1130 lb.	48-41-24	2700	12.5
	Orange	A5D2S1JNNB5000	1.049	1.340	1130 lb.	66-41-24	5000	12.5
	Orange	A5D2S1JNNB6500	1.049	1.340	1130 lb.	72-41-24	6500	12.5
	Orange	A5D2S1JNNB7000	1.049	1.340	1130 lb.	72-45-24	7000	12.5
	Orange	A5D2S1JNNB8000	1.049	1.340	1130 lb.	82-41-24	8000	12.5
1 1/4"	Orange	A6D2S1JNNB1000	1.250	1.565	1130 lb.	48-30-24	1000	14.4
	Orange	A6D2S1JNNB1600	1.250	1.565	1130 lb.	48-41-24	1600	14.4
	Orange	A6D2S1JNNB2500	1.250	1.565	1130 lb.	66-41-24	2500	14.4
	Orange	A6D2S1JNNB4000	1.250	1.565	1130 lb.	66-41-24	4000	14.4
	Orange	A6D2S1JNNB5000	1.250	1.565	1130 lb.	72-41-24	5000	14.4
	Orange	A6D2S1JNNB6000	1.250	1.565	1130 lb.	82-41-24	6000	14.4
	Orange	A6D2S1JNNB7000	1.250	1.565	1130 lb.	84-45-24	7000	14.4
	1 1/2"	Orange	A9D2S1JNNB1000	1.500	1.825	1130 lb.	66-41-24	1000
Orange		A9D2S1JNNB2200	1.500	1.825	1130 lb.	66-41-24	2200	17.8
Orange		A9D2S1JNNB2900	1.500	1.825	1130 lb.	72-41-24	2900	17.8
Orange		A9D2S1JNNB4000	1.500	1.825	1130 lb.	82-41-24	4000	17.8
2"	Orange	A13D2S1JNNB500	2.000	2.425	1130 lb.	48-30-24	500	25.0
	Orange	A13D2S1JNNB750	2.000	2.425	1130 lb.	48-41-24	750	25.0
	Orange	A13D2S1JNNB1000	2.000	2.425	1130 lb.	66-41-24	1000	25.0
	Orange	A13D2S1JNNB1500	2.000	2.425	1130 lb.	66-41-24	1500	25.0
	Orange	A13D2S1JNNB1800	2.000	2.425	1130 lb.	72-41-24	1800	25.0
	Orange	A13D2S1JNNB2000	2.000	2.425	1130 lb.	82-41-24	2000	25.0

Standard Length – Coils

	Color	Part No.	Nom. I.D.	Nom. O.D.	Pull Tape	Box Size	Reel Length (ft.)	Wt. per 100 ft. (lbs.)	
1"	Orange	A5D2E1JNNA250	1.049	1.340	Empty	COIL	250/Split	12.5	
	Orange	A5D2E1JNNA250B	1.049	1.340	Empty	34-14-34	250/Split	12.5	
	Orange	A5D2S1JNNB250	1.049	1.340	1130 lb.	COIL	250	12.5	
	Orange	A5D2S1JNNB250B	1.049	1.340	1130 lb.	34-14-34	250	12.5	
	Orange	A5D2S1JNNB500	1.049	1.340	1130 lb.	COIL	500	12.5	
	Orange	A5D2S1JNNB500B	1.049	1.340	1130 lb.	39-15-39	500	12.5	
	1 1/4"	Orange	A6D2E1JNNA250	1.250	1.565	Empty	COIL	250/Split	14.4
		Orange	A6D2E1JNNA250B	1.250	1.565	Empty	39-15-39	250/Split	14.4
Orange		A6D2S1JNNB250	1.250	1.565	1130 lb.	COIL	250	14.4	
Orange		A6D2S1JNNB250B	1.250	1.565	1130 lb.	39-15-39	250	14.4	
Orange		A6D2S1JNNB500	1.250	1.565	1130 lb.	COIL	500	14.4	
Orange		A6D2S1JNNB500B	1.250	1.565	1130 lb.	44-18-44	500	14.4	
1 1/2"		Orange	A9D2S1JNNB250	1.500	1.825	1130 lb.	COIL	250	17.8
		Orange	A9D2S1JNNB250B	1.500	1.825	1130 lb.	44-18-44	250	17.8
	Orange	A9D2S1JNNB500	1.500	1.825	1130 lb.	COIL	500	17.8	
	Orange	A13D2S1JNNB250	2.000	2.425	1130 lb.	COIL	250	25.0	

Custom Orders

- * Custom Orders are not returnable
- * Custom lengths are available in minimum order quantities of 1000 ft. or min. set up charge

How to Build a Part Number:

Product	Size	Type	Wall	Options	Splits	Color	Stripes	Tape	Length
A = HDPE	5 = 1" 6 = 1-1/4" 9 = 1-1/2" 13 = 2"	D = Corrugated	2 = None - Corr	N = None - Custom C = Heavy Wall E = Slit S = Standard Length	1 = 1 Way Single 2 = 2 Way Segmented 3 = 3 Way Segmented 4 = 4 Way Segmented 5 = 2 Way Parallel 6 = 3 Way Parallel 7 = 4 Way Parallel 12 = 2 Way Compartment 13 = 3 Way Compartment 14 = 4 Way Compartment	A = Black B = Blue C = Brown D = Buff E = Gray F = Green G = Lilac H = Lt. Green J = Orange K = Red L = Terra Cotta M = White N = Yellow	NN = None 1A = Black Stripes 1B = Blue Stripes 1C = Brown Stripes 1D = Buff Stripes 1E = Gray Stripes 1F = Green Stripes 1G = Lilac Stripes 1H = Lt. Green Stripes 1J = Orange Stripes 1K = Red Stripes 1L = Terra Cotta Stripes 1M = White Stripes 1N = Yellow Stripes	A = Empty B = 1130 lb. Polyester Tape C = 1250 lb. Polyester Tape D = 1500 Polyester lbs. E = 1800 lb. Polyester Tape G = 200 lbs. Polyester Tape J = 2500 lbs. Polyester Tape T = 1250 lbs. Poly Metric Tape	1500 (Equals 1500 Feet)

Specifications

1.0 General

1.1 Carlon HDPE duct is manufactured to the following various industry standards and specifications for dimensional requirements.

ASTM F 2160 Solid Wall High Density Polyethylene (HDPE) Conduit Based on Controlled Outside Diameter (OD).

ASTM D 2239 Polyethylene (PE) Plastic Pipe (SIDR) Based on Controlled Inside Diameter.

ASTM D 3035 Polyethylene (PE) Plastic Pipe (SDR) Based on Controlled Outside Diameter.

NEMA TC-7 Smooth Wall Coilable Polyethylene Electrical Plastic Conduit.

2.0 Material

Carlon duct is manufactured from a suitable thermoplastic polymer conforming to the minimum standard of PE334470E/C as defined in ASTM D3350. (see table 1)

Carlon® High Density Polyethylene

duct is manufactured in the following configurations:

Smoothwall – Smooth Interior and Smooth Exterior wall.

Rib/Smooth – Ribbed Interior and Smooth Exterior wall.

3.0 Product Description

Polyethylene duct and innerduct is an extruded coilable tubing for use as a single or multiple raceway.

The conduit may be direct buried, encased in concrete and used as innerducts.

Innerducts are used primarily to provide multiple raceways within an existing conduit system.

Table 1 – Resin Properties

The resin properties shall meet or exceed the values listed below for HDPE.

ASTM Test	Description	Values HDPE
D-1505	Density g/CM ³	.941 - .955
D-1238	Melt Index, g/10 min Condition E	.05 - .50
D-790	Flexural Modulus, MPa (PSI)	80,000 min.
D-638	Tensile strength at yield (psi)	3000 min.
D-1693	Environmental Stress Crack Resistance Condition B,F ₁₀	96 hrs. min.
D-746	Brittleness Temperature	-75°C

Requests for certifications must be requested at time of quote

Specifications

Nom. Size	Nom. ID	Nom. OD	Min. Wall	Wt/ 100 Ft.	Pull Tensile Safe Lbs.
SDR 7 - ASTM D3035					
1"	0.939	1.315	0.188	28.552	743
1-1/4"	1.186	1.660	0.237	45.448	1183
1-1/2"	1.358	1.900	0.271	59.491	1549
2"	1.697	2.375	0.339	93.012	2421
3"	2.500	3.500	0.500	202.140	5262
4"	3.214	4.500	0.643	334.212	8700
5"	3.972	5.562	0.795	510.709	13295
6"	4.733	6.625	0.946	723.976	18847
8"	6.161	8.625	1.232	1227.418	31953
10"	7.678	10.750	1.536	1907.218	49649
12"	9.108	12.750	1.821	2681.954	69818
14"	10.000	14.000	2.000	3234.240	84195
16"	11.428	16.000	2.286	4224.753	109980
SDR 9 - ASTM D3035 / F2160					
1"	1.023	1.315	0.146	23.000	599
1-1/4"	1.292	1.660	0.184	36.599	953
1-1/2"	1.478	1.900	0.211	48.026	1250
2"	1.847	2.375	0.264	75.102	1955
3"	2.722	3.500	0.389	163.084	4245
4"	3.500	4.500	0.500	269.520	7016
5"	4.326	5.562	0.618	411.745	10719
6"	5.153	6.625	0.736	584.091	15205
8"	6.709	8.625	0.958	989.810	25767
10"	8.362	10.750	1.194	1537.593	40027
12"	9.916	12.750	1.417	2164.092	56336
14"	10.888	14.000	1.556	2609.340	67927
16"	12.444	16.000	1.778	3407.638	88709

Nom. Size	Nom. ID	Nom. OD	Min. Wall	Wt/ 100 Ft.	Pull Tensile Safe Lbs.
SDR 11 - ASTM D3035 / F2160					
1/2"	0.688	0.840	0.076	7.825	204
3/4"	0.860	1.050	0.095	12.226	318
1"	1.075	1.315	0.120	19.325	503
1-1/4"	1.358	1.660	0.151	30.706	799
1-1/2"	1.554	1.900	0.173	40.262	1048
2"	1.943	2.375	0.216	62.845	1636
3"	2.864	3.500	0.318	136.360	3550
4"	3.682	4.500	0.409	225.483	5870
5"	4.550	5.562	0.506	344.761	8975
6"	5.421	6.625	0.602	488.619	12720
8"	7.057	8.625	0.784	828.416	21566
10"	8.796	10.750	0.977	1286.718	33496
12"	10.432	12.750	1.159	1810.362	47128
14"	11.454	14.000	1.273	2183.310	56837
16"	13.090	16.000	1.455	2851.923	74242
SDR 13.5 - ASTM D3035 / F2160 / NEMA TC-7 EPEC-B					
1/2"	0.716	0.84	0.062	6.500	169
3/4"	0.894	1.050	0.078	10.217	266
1"	1.121	1.315	0.097	15.921	414
1-1/4"	1.414	1.660	0.123	25.477	663
1-1/2"	1.618	1.900	0.141	33.423	870
2"	2.023	2.375	0.176	52.155	1358
2-1/2"	2.449	2.875	0.213	76.410	1989
3"	2.982	3.500	0.259	113.120	2945
4"	3.834	4.500	0.333	186.994	4868
4-3/4"	4.084	4.750	0.333	198.213	5160
5"	4.738	5.562	0.412	285.934	7444
6"	5.643	6.625	0.491	405.869	10566
8"	7.347	8.625	0.639	687.688	17902
10"	9.158	10.750	0.796	1067.755	27796
12"	10.862	12.750	0.944	1501.882	39098
14"	11.926	14.000	1.037	1811.529	47158
16"	13.630	16.000	1.185	2365.816	61588

Specifications

Nom. Size	Nom. ID	Nom. OD	Min. Wall Wall	Wt/ 100 Ft.	Pull Tensile Safe lbs.
SDR 15.5 - ASTM D3035					
1"	1.147	1.315	0.084	13.935	363
1-1/4"	1.446	1.660	0.107	22.393	583
1-1/2"	1.654	1.900	0.123	29.455	767
2"	2.069	2.375	0.153	45.814	1193
3"	3.048	3.500	0.226	99.712	2596
4"	3.920	4.500	0.290	164.528	4283
5"	4.844	5.562	0.359	251.715	6553
6"	5.771	6.625	0.427	356.649	9284
8"	7.513	8.625	0.556	604.582	15739
10"	9.362	10.750	0.694	940.472	24483
12"	11.104	12.750	0.823	1322.794	34435
14"	12.194	14.000	0.903	1593.751	41489
16"	13.936	16.000	1.032	2081.634	54190
SDR 17 - ASTM D3035					
1"	1.161	1.315	0.077	12.846	334
1-1/4"	1.464	1.660	0.098	20.629	537
1-1/2"	1.676	1.900	0.112	26.986	703
2"	2.095	2.375	0.140	42.166	1098
2-1/2"	2.537	2.875	0.169	61.628	1604
3"	3.088	3.500	0.206	91.443	2380
4"	3.970	4.500	0.265	151.238	3937
5"	4.908	5.562	0.327	230.688	6005
6"	5.845	6.625	0.390	327.689	8531
8"	7.611	8.625	0.507	554.649	14439
10"	9.486	10.750	0.632	861.733	22433
12"	11.250	12.750	0.750	1212.840	31573
14"	12.352	14.000	0.824	1463.093	38088
16"	14.118	16.000	0.941	1909.619	49712
SDR 21 - ASTM D3035					
1"	1.189	1.315	0.063	10.629	277
1-1/4"	1.502	1.660	0.079	16.831	438
1-1/2"	1.720	1.900	0.090	21.952	571
2"	2.149	2.375	0.113	34.445	897
3"	3.166	3.500	0.167	75.009	1953
4"	4.072	4.500	0.214	123.602	3218
5"	5.032	5.562	0.265	189.163	4924
6"	5.995	6.625	0.315	267.856	6973
8"	7.803	8.625	0.411	454.944	11843
10"	9.726	10.750	0.512	706.393	18389
12"	11.536	12.750	0.607	993.289	25858
14"	12.666	14.000	0.667	1198.436	31198
16"	14.476	16.000	0.762	1564.746	40734
SIDR 7 - ASTM D2239					
1"	1.049	1.349	0.150	24.237	631
1-1/4"	1.380	1.774	0.197	41.866	1090
1-1/2"	1.610	2.070	0.230	57.030	1485
2"	2.067	2.658	0.295	94.002	2447
4"	4.026	5.176	0.575	356.617	9283
6"	6.065	7.798	0.866	809.388	21069
SIDR 9 - ASTM D2239					
1"	1.049	1.283	0.117	18.384	479
1-1/4"	1.380	1.686	0.153	31.608	823
1-1/2"	1.610	1.968	0.179	43.154	1123
2"	2.067	2.527	0.230	71.195	1853
4"	4.026	4.921	0.447	269.664	7021
6"	6.065	7.143	0.674	612.092	15932
SIDR 9 TRUE					
1"	1.020	1.242	0.111	16.918	440
1-1/4"	1.270	1.546	0.138	26.184	682
SIDR 11.5 - ASTM D2239					
1"	1.049	1.231	0.091	13.980	364
1-1/4"	1.380	1.620	0.120	24.257	631
1-1/2"	1.610	1.890	0.140	33.016	859
2"	2.067	2.427	0.180	54.505	1419
4"	4.026	4.726	0.350	206.398	5373
6"	6.065	7.119	0.527	468.154	12187

Nom. Size	Nom. ID	Nom. OD	Min. Wall Wall	Wt/ 100 Ft.	Pull Tensile Safe lbs.
SIDR 11.5 TRUE					
1"	1.020	1.194	0.087	12.979	338
1-1/4"	1.270	1.488	0.109	20.256	527
1-1/2"	1.520	1.780	0.130	28.906	752
2"	1.995	2.343	0.178	50.859	1352
4"	4.050	4.700	0.325	191.612	4988
6"	6.050	7.000	0.475	417.672	10873
SIDR 15 - ASTM D2239					
1"	1.049	1.189	0.070	10.556	275
1-1/4"	1.380	1.564	0.092	18.250	475
1-1/2"	1.610	1.824	0.107	24.758	645
2"	2.067	2.343	0.138	41.006	1067
4"	4.026	4.562	0.268	155.081	4037
6"	6.065	6.873	0.404	352.192	9168
TRUE 9 - ASTM F2160					
1"	1.024	1.259	0.111	18.075	447
1-1/4"	1.274	1.569	0.139	28.255	697
1-1/2"	1.529	1.883	0.167	40.692	1005
2"	2.039	2.510	0.222	72.183	1782
TRUE 11 - ASTM F2160					
1"	1.024	1.217	0.091	14.571	359
1-1/4"	1.274	1.516	0.114	22.747	561
1-1/2"	1.529	1.817	0.136	32.465	802
2"	2.039	2.425	0.182	58.051	1432
SCHEDULE 40 - ASTM D2447 / F2160 / NEMA TC-7 EPEC-40					
1/2"	0.622	0.84	0.109	10.738	280
3/4"	0.824	1.05	0.113	14.269	371
1"	1.049	1.315	0.133	21.185	551
1-1/4"	1.380	1.660	0.140	28.677	747
1-1/2"	1.610	1.900	0.145	34.293	893
2"	2.067	2.375	0.154	46.093	1200
2-1/2"	2.469	2.875	0.203	73.096	1903
3"	3.068	3.500	0.216	95.591	2488
4"	4.026	4.500	0.237	136.152	3544
5"	5.046	5.562	0.258	184.410	4801
6"	6.065	6.625	0.280	239.415	6233
8"	7.981	8.625	0.322	360.290	9379
10"	10.020	10.750	0.365	510.811	13298
12"	11.938	12.750	0.406	675.372	17582
SCHEDULE 80 - ASTM D2447 / F2160 / NEMA TC-7 EPEC-80					
1/2"	0.546	0.84	0.147	13.728	357
3/4"	0.742	1.05	0.154	18.595	484
1"	0.957	1.315	0.179	27.403	713
1-1/4"	1.278	1.660	0.191	37.811	984
1-1/2"	1.500	1.900	0.200	45.818	1193
2"	1.939	2.375	0.218	63.368	1650
2-1/2"	2.323	2.875	0.276	96.667	2516
3"	2.900	3.500	0.300	129.370	3368
4"	3.826	4.500	0.337	189.059	4922
5"	4.812	5.562	0.375	262.125	6824
6"	5.761	6.625	0.432	360.534	9386
NEMA TC-7 EPEC A					
1/2"	0.546	0.84	0.06	6.307	164
3/4"	0.93	1.05	0.06	8.005	208
1"	1.165	1.315	0.075	12.533	326
1-1/4"	1.460	1.660	0.100	21.023	547
1-1/2"	1.670	1.900	0.115	27.663	720
2"	2.085	2.375	0.145	43.575	1134
2-1/2"	2.469	2.875	0.203	73.096	1903
3"	3.068	3.500	0.216	95.591	2488
4"	4.026	4.500	0.237	136.152	3544
5"	5.046	5.562	0.258	184.410	4801
6"	6.065	6.625	0.280	239.415	6233

Internal Rib – Add .04 to Nom. ID (1/2" through 6") Not available in all wall types - consult factory.

Pull Tensile Safe = Based on Plastic Pipe Institute tensile calculations and maximum tensile stress recommendations of 1/3 yield tensile for pulls of 30 to 60 minutes or less in directional drilling applications and pulling as innerduct into conduit.

Packaging Options & Truckload Quantities

Packaging Options

Reels



Segmented
(3/4" - 2")

Physically segmenting different colors into one, two, three or four separate segments allowing independent pulling of ducts.



Paralleled
(3/4" through 2")
1" - 1 1/4" diameter recommended

Extruding each color onto a single reel and then simultaneously pulling onto one reel. Ideal for using all ducts at one time.



Compartmentalized
(3/4" through 2")
1 1/2" - 2" diameter recommended

Physically compartmentalizing different colors into one, two, three or four separate segments allowing independent pulling of ducts. Full rings help align duct during pull.

Coils



Standard length and custom coils available 1" - 6".
Call for quantity and dimensions available.

Truckload Quantities

Reels

Flatbed (48 ft.)

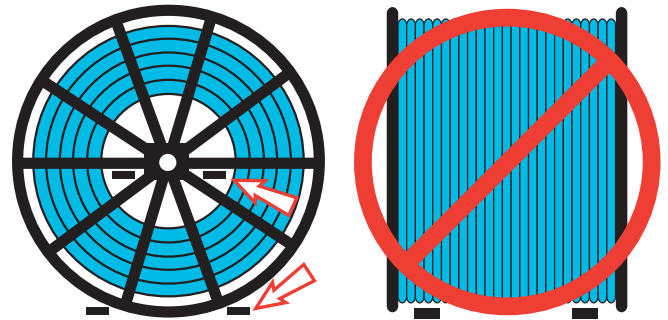
Reel Size	Number of Reels per Truckload
48"	24
66"	18
72"	16
82"	14
84"	14
96"	12
102"	12

Step Deck Flatbed

Reel Size	Number of Reels per Truckload
114"	8
120"	8

NOTE: Two additional reels, 96" or smaller, can fit on the upper deck.

Loading Reels



Reels must be lifted from the side with lift truck forks inserted through the spokes of the reel, or at the bottom with entry from the side of the reel. Reels should NEVER be lifted from the front of the reel or contact innerduct.

Bundles 40 ft / 50 ft Lengths

Size	# of Lengths per Bundle	Ft. per Bundle 40 ft. Lengths	Ft. per Bundle 50 ft. Lengths	Bundles per Truck	Total Feet per Truck 40 ft. Lengths	Total Feet per Truck 50 ft. Lengths
4"	57	2280	2850	8	18240	22800
6"	26	1040	1300	8	8320	10400
8"	14	560	700	8	4480	5600
10"	4	160	200	18	2880	3600
12"	4	160	200	14	2240	2800
14"	3	120	150	14	1680	2100
16"	3	120	150	12	1440	1800



Couplings

Standard “E-Loc”®

Designed for use with smoothwall OD controlled innerduct (ASTM 3035), Sch. 40 and Sch. 80 innerduct, and is pressure tight to internal pressures above 200 psi when restrained or buried. Ideal for joining PE to PVC or threaded steel conduit.



Part No.	Size	Nom. O.D. (of Duct)	Std. Ctn. Qty.	Std. Ctn. Wt.
EL1.050	3/4"	1.050"	50	19
EL1.315	1"	1.315"	50	46
EL1.660	1 1/4"	1.660"	50	34
EL1.900	1 1/2"	1.900"	25	28
EL2.375	2"	2.375"	25	40
EL3.500	3"	3.500"	25	48
EL4.500	4"	4.500"	25	67
EL5.563	5"	5.563"	16	44
EL6.00	6"	6.625"	12	40

Double “E-Loc”® Standard Couplings

Designed to join both smoothwall and ribbed OD wall innerduct and are used when air and water-tight integrity is imperative. Internal pressures above 200 psi are maintained when the conduit is unrestrained.



Part No.	Size	Nom. O.D. (of Duct)	Std. Ctn. Qty.	Std. Ctn. Wt.
DEL131	1"	1.315"	50	63
DEL150	1 1/4" True	1.500"	50	58
DEL154	1 1/4"	1.540"	50	58
DEL166	1 1/4"	1.660"	50	53
DEL190	1 1/2"	1.900"	24	43
DEL237	2"	2.375"	25	57

Transition Couplings

Part No.	Size	Nom. O.D. (of Duct)	Std. Ctn. Qty.	Std. Ctn. Wt.
DEL150-154	1 1/4"	1.500" - 1.540"	50	58
DEL150-166	1 1/4"	1.500" - 1.660"	50	58
DEL154-166	1 1/4"	1.540" - 1.660"	50	58

“E-Loc” is a registered trademark of ETCO Specialty Products, Inc.

Universal Aluminum Couplings

Self-threading, which draws each end of the conduit into the center of the coupler.



Part No.	Size	Nom. O.D. (Duct Range)	Std. Ctn. Qty.	Std. Ctn. Wt.
P75	3/4"	.91 – 1.08	10	12
P100	1"	1.21 – 1.41	100	25
P125	1 1/4"	1.44 – 1.68	100	28
P150CPLR	1 1/2"	1.80 – 2.02	100	35
P200	2"	2.31 – 2.48	50	19
P300	3"	3.495 – 3.505	12	10
P400	4"	4.41 – 4.65	12	12

Barbed Couplings Press-On/Screw-On

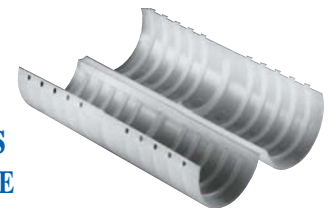
Aluminum



Part No.	Size	Nom. O.D. (of Duct)	Std. Ctn. Qty.	Std. Ctn. Wt.
BS1.315	1" SDR	1.315"	100	16
BS1.194	1" True 11	1.194"	100	16
BS1.488	1 1/4" True 11	1.488"	100	16
BS1.660	1 1/4" SDR	1.660"	100	16
BS1.900	1 1/2" SDR	1.900"	100	24
BS2.375	2" SDR	2.375"	100	34

Nonmetallic Clamshell Couplings

For use with Corrugated HDPE



Part No.	Size	Nom. O.D. (of Duct)	Std. Ctn. Qty.	Std. Ctn. Wt.
E144F	1"	1.34"	30	1.7
E144GT	1 1/4"	1.565"	25	2

Couplings

Electrofusion Coupling

Provides an airtight duct system and is used to join HDPE to PVC or threaded steel conduit. Ideal for directional bore applications.



Part No.	Nom. O.D. (of Duct)	Std. Ctn. Qty.	Std. Ctn. Wt.
575-4075	1.488"	40	12.96
575-4049	1.526"	40	12.44
575-0640	1.660"	40	12
575-0641	1.900"	140	55.3
575-0642	2.375"	30	17.46
575-0643	3.500"	36	45.47
575-0644	4.500"	10	18.77

Toneable Pressure Coupling

Designed to join Carlon® Toneable Duct System



150 PSI at 73°F

Part No.	Nom. O.D. of Duct	Nom. O.D.	Std. Ctn. Qty.	Std. Ctn. Wt. (lbs.)
TDC100	1"	1.315	60	34
TDC125	1 1/4"	1.66	36	28
TDC150	1 1/2"	1.90	30	31
TDC200	2"	2.375	12	18

Threaded Plugs

For use with Toneable Coupling



Part No.	Nom. O.D. of Duct	Nom. O.D.	Std. Ctn. Qty.	Std. Ctn. Wt. (lbs.)
TPLG100	1"	1.315	50	4
TPLG125	1 1/4"	1.66	25	3
TPLG150	1 1/2"	1.90	25	3.5
TPLG200	2"	2.375	10	2.7

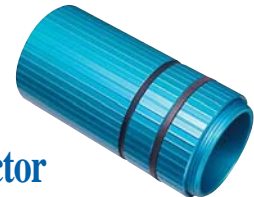
Nonmetallic Internal Couplings

Nonmetallic, self-threading and are recommended for use with corrugated duct.



Part No.	Size	Nom. I.D. Range	Std. Ctn. Qty.	Std. Ctn. Wt.
PIC100	1"	1.05	100	24
PIC125	1 1/4"	1.25	100	26

Terminating Connector



Part No.	Size	Nom. O.D. Range	Std. Ctn. Qty.	Std. Ctn. Wt.
TC100	1"	.91 – 1.08	12	50
TC125	1 1/4"	1.495 – 1.70	12	52
TC150	1 1/2"	1.80 – 2.00	12	56
TC200	2"	2.31 – 2.52	12	58

Duct Plugs



Blank

Part No.	Size	Duct I.D. Range	Std. Ctn. Qty.	Std. Ctn. Wt.
MAEPG2	1"	.96" - 1.16"	50	4.5
MAEPG4	1 1/4"	1.14" - 1.48"	50	5.5
MAEPG3	1 1/2"	1.49" - 1.83"	50	7.5
MAEPG5	2"	1.83" - 2.36"	50	12.5
MAEPG55	3"	2.99" - 3.46"	50	19.5
MAEPG6	3 1/2"	3.42" - 4.00"	25	13
MAEPG7	4"	3.94" - 4.33"	50	32.5
MAEPG8	5"	5.00" - 5.35"	25	24.5

Multi-Access



Part No.	Type	Duct I.D. Range	Innerduct I.D. Range	Std. Ctn. Qty.	Std. Ctn. Wt.
MATPG2	3-Hole	3.92" - 4.21"	1.31" - 1.42"	24	27
MATPG3	3-Hole	3.92" - 4.21"	1.53" - 1.67"	24	24
MAQPG2	4-Hole	3.92" - 4.21"	1.19" - 1.36"	24	23
MAQPG4	4-Hole	4.16" - 4.34"	1.19" - 1.36"	24	34

Split Plugs for Sealing Innerduct and Cable



Part No.	Size	Duct I.D. Range	Cable O.D. Range	Std. Ctn. Qty.	Std. Ctn. Wt.
MAFPG2	1"	1.00" - 1.10"	0.35" - 0.57"	50	8
MAFPG21	1"	1.00" - 1.10"	0.43" - 0.57"	50	8
MAFPG22	1"	1.00" - 1.10"	0.57" - 0.70"	50	8
MAFPG3	1 1/4"	1.22" - 1.36"	0.35" - 0.57"	50	10
MAFPG4	1 1/4"	1.22" - 1.36"	0.57" - 0.70"	50	10
MAFPG41	1 1/4"	1.22" - 1.34"	0.70" - 0.90"	50	10
MAFPG5	1 1/2"	1.50" - 1.65"	0.35" - 0.57"	50	15
MAFPG6	1 1/2"	1.50" - 1.65"	0.50" - 0.70"	50	15
MAFPG9	2"	1.98" - 1.97"	0.35" - 0.57"	50	22

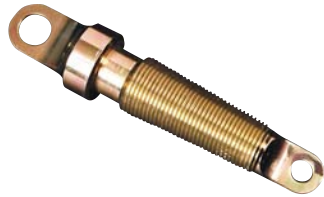
Multiple Innerduct Pulling Harness



For use with Pulling Innerducts into a 4" Conduit

Part No.	Description	Working Load Per Leg (lbs.)	Working Load Combined (lbs.)	Std. Ctn. Qty.	Wt./Ea. (lbs.)
MAPH3	3-Way 1/4" Cable	1400	2900	1	14
MAPH4	4-Way 1/4" Cable	1400	4200	1	15

Innerduct Pulling Eyes



Part No.	Size	Range	Std. Ctn. Qty.	Wt./Ea. (lbs.)
MAPE3	1"	1.00 - 1.25	1	2
MAPE6	1 1/4"	1.21 - 1.41	1	4.0
MAPE8	1 1/2"	1.42 - 1.62	1	5.0
MAPE9	2"	1.78 - 2.03	1	6.0

Swivels - Ball Bearing



Part No.	Description	Work/Break Load (lbs.)	Dimensions	Wt./Ea. (lbs.)
MASV4	Non-Breakaway	1800	7/8" x 4 1/2"	.53
MASV5	Non-Breakaway	600	5/8" x 4"	1.00

Swivels - Breakaway and Replacement Pins



Part No.	Description	Work/Break Load (lbs.)	Dimensions	Std. Ctn. Qty.	Wt./Ea. (lbs.)	Pin Part No.	Description
MASV6	Breakaway	600	7/8" x 4 1/2"	1	.55	MASVP6	7/8" Replacement Pin for MASV6
MASV7	Breakaway	600	5/8" x 3 1/2"	1	.19	MASVP7	5/8" Replacement Pin for MASV7
MASV8	Breakaway	450	5/8" x 3 1/2"	1	.19	MASVP8	5/8" Replacement Pin for MASV8

Conduit Cutters

Kwikcut Cutter



For fast, smooth field cuts of 1/2" through 1" Innerduct.

Part No.	Size	Std. Ctn. Qty.
CC120B	8"	10

Medium Cutter



Hand held cutter makes fast square, smooth field cuts on Innerduct sizes 1/2" through 1 1/4".

Part No.	Size	Std. Ctn. Qty.
CC125	9"	1

Large Cutter



For clean cuts of Innerduct sizes 1/2" through 2".

Part No.	Size	Std. Ctn. Qty.
CC122	17 1/2"	1

Figure-8 Web Slitter



Part No.	Size	Std. Ctn. Qty.
3056MW	6.6M	1
30510MW	10M	1

Figure-8 Jacket Slitter



Part No.	Size	Std. Ctn. Qty.
3056MJ	6.6M	1
30510MJ	10M	1

Underground Warning Tape – Orange

CAUTION TELEPHONE CABLE BURIED BELOW

Part No.	Type	Width	Ft. per Spool	Wt. ea. lbs.
MAT3T21	Standard	3"	1000'	7
MAT3T61	Detectable	3"	1000'	8

CAUTION FIBER OPTIC CABLE BURIED BELOW

Part No.	Type	Width	Ft. per Spool	Wt. ea. lbs.
MAT3O21	Standard	3"	1000'	7
MAT6O21	Standard	6"	1000'	13
MAT3O51	Extra Stretch	3"	1000'	7
MAT3O61	Detectable	3"	1000'	8
MAT6O61	Detectable	6"	1000'	16



End Caps

Part No.	Size	Nom. O.D.	Std. Ctn. Qty.
EC1.315	1"	1.315"	1
EC1.488	1 1/4"	1.488"	1
EC1.660	1 1/4"	1.660"	1
EC1.900	1 1/2"	1.900"	1
EC2.375	2"	2.375"	1
EC4.500	4"	4.500"	1



Rope (Conduit Pulling Lines for Conductors or Fiber Optics)

White Diamond Braid Rope

This rope is constructed of polyethylene over polyester, designed specifically for fiber-optic pulling. The polyethylene jacket gives the "slippery" feel that gives less drag in pulling through conduit.

Part No.	Reel Lengths	Diameter	Recommended Working Load (lbs.)	Approximate Avg. Tensile (lbs.)	Std. Ctn. Wt. (lbs.)
SB14105	5,000 ft.	1/4"	260	1700	1000



Tape

Prelubricated, woven polyester tape made from low friction, high abrasion resistant yarns providing a low coefficient of friction. Tape is printed with sequential footage markings for accurate measurements.

Part No.	Size	Tensile Strength (lbs.)	Reel Lengths
TL14203	1/2"	1130	3,000 ft.
TL14205	1/2"	1130	5,000 ft.
TL14505	1/2"	1250	5,000 ft.
TL14510	1/2"	1250	10,000 ft.
TL38203	5/8"	1800	3,000 ft.
TL38265	5/8"	1800	6,500 ft.
TL38210	5/8"	1800	10,000 ft.



Reel Return Policy

The Carlon Reel Return Policy

The Carlon Reel Return Policy offers our customers the opportunity to dispose of empty steel reels used to ship Carlon High Density Polyethylene. A credit will be issued for each reel returned to Lamson & Sessions in good condition. Details outlining the program are listed below:

Reel Shipment: Reels may be returned broken down into flanges and staves or fully assembled. Only Carlon Lamson & Sessions reels will be accepted. All broken down reel flanges and staves should be banded onto pallet for forklift off loading and safe transport.

Freight: The customer is responsible for choosing a carrier and paying all freight charges associated with the return of Carlon Reels (Class 55 freight is recommended). Reels must be shipped "Prepaid". Reels shipped collect will be refused. A 24-hour notice to receiving plant is needed before the truck arrives. It is Lamson & Sessions policy to honor appointments and unload in an efficient manner. Lamson & Sessions will not pay any detention incurred by carriers.

Returned Goods Authorization (RGA) Required: Contact a local Carlon Sales Representative to request a Returned Goods Authorization number. The RGA number needs to be included in the packing slip for the reel to be accepted as a return.

Reel Quality Requirements: The reel must be undamaged, in full working condition, and include all components. This includes but is not limited to warping, flattening, or any structural damage to the reel or its components. Reel acceptability will be determined by receiving plant using quality inspection criteria.

Credit: A credit for each reel meeting the above requirements will be issued to the customer's account. If the reel does not meet the quality requirements, a credit will not be issued and a \$20 disposal fee for each non-returnable reel will be deducted from total credit.

Credit Amount:

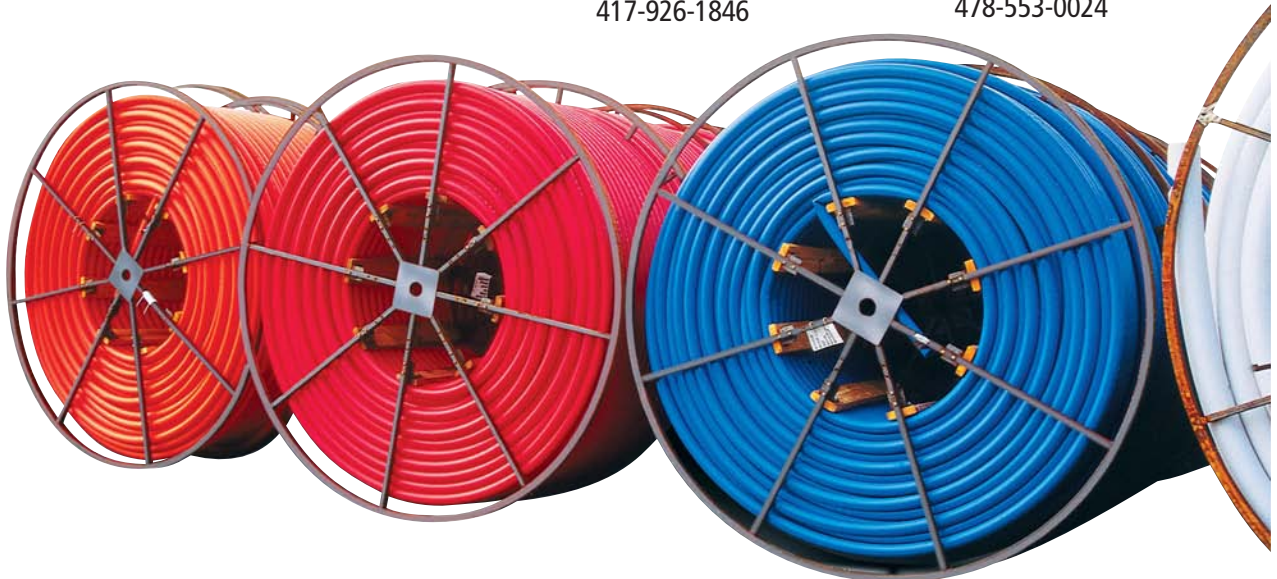
48" - 66" = \$30 72" - 84" = \$40 96" - 102" = \$50 114" - 120" = \$75

Pick-up: Choose your own carrier, or use one from the list below.

J&J Trucking	800-397-1874
TEI	800-471-4654
ICS	800-877-7875
Dynasty Trans.	800-318-9550
ICCI	800-958-9253

Ship to Address:

Lamson & Sessions 1422 Irwin Drive Erie, PA 16505 814-455-7587	Lamson & Sessions 1776 E. Beamer Woodland, CA 95685 530-669-0160
Lamson & Sessions 11119 Business 90 Mountain Grove, MO 65711 417-926-1846	Lamson & Sessions 9000 Joiner Rd. Tennille, GA 31089 478-553-0024



Carlton® HDPE Quote Request

Date: _____ Needed By: _____ Destination: _____

Customer: _____ Account Number: _____ Application: _____

Rep Agency: _____ Market: _____ Power _____ Telecommunication _____ Electrical _____ CATV _____

1. PRODUCT TYPE <input type="checkbox"/> A HDPE <input type="checkbox"/> E Aerial HDPE <input type="checkbox"/> S Aerial Figure 8 - 6.6M <input type="checkbox"/> T Aerial Figure 8 - 10M <input type="checkbox"/> U UL Listed HDPE <input type="checkbox"/> Certification Required _____ Specification	4. WALL TYPE <table style="width:100%;"> <tr> <td><input type="checkbox"/> 2 None - Corr</td> <td><input type="checkbox"/> 26 SIDR 11.5</td> </tr> <tr> <td><input type="checkbox"/> 4 SCH 40</td> <td><input type="checkbox"/> 27 SIDR 11.5 True</td> </tr> <tr> <td><input type="checkbox"/> 5 SCH 80</td> <td><input type="checkbox"/> 29 SIDR 15</td> </tr> <tr> <td><input type="checkbox"/> 6 SDR 11</td> <td><input type="checkbox"/> 34 SIDR 7</td> </tr> <tr> <td><input type="checkbox"/> 9 SDR 13.5</td> <td><input type="checkbox"/> 36 SIDR 9</td> </tr> <tr> <td><input type="checkbox"/> 13 SDR 15.5</td> <td><input type="checkbox"/> 37 SIDR 9 True</td> </tr> <tr> <td><input type="checkbox"/> 14 SDR 17</td> <td><input type="checkbox"/> 42 TC-7-A</td> </tr> <tr> <td><input type="checkbox"/> 16 SDR 21</td> <td><input type="checkbox"/> 45 True 11</td> </tr> <tr> <td><input type="checkbox"/> 22 SDR 7</td> <td><input type="checkbox"/> 46 True 9</td> </tr> <tr> <td><input type="checkbox"/> 24 SDR 9</td> <td></td> </tr> </table>	<input type="checkbox"/> 2 None - Corr	<input type="checkbox"/> 26 SIDR 11.5	<input type="checkbox"/> 4 SCH 40	<input type="checkbox"/> 27 SIDR 11.5 True	<input type="checkbox"/> 5 SCH 80	<input type="checkbox"/> 29 SIDR 15	<input type="checkbox"/> 6 SDR 11	<input type="checkbox"/> 34 SIDR 7	<input type="checkbox"/> 9 SDR 13.5	<input type="checkbox"/> 36 SIDR 9	<input type="checkbox"/> 13 SDR 15.5	<input type="checkbox"/> 37 SIDR 9 True	<input type="checkbox"/> 14 SDR 17	<input type="checkbox"/> 42 TC-7-A	<input type="checkbox"/> 16 SDR 21	<input type="checkbox"/> 45 True 11	<input type="checkbox"/> 22 SDR 7	<input type="checkbox"/> 46 True 9	<input type="checkbox"/> 24 SDR 9		9. PULL LINE <input type="checkbox"/> A Empty <input type="checkbox"/> B 1130 lbs. Polyester Tape <input type="checkbox"/> C 1250 lbs. Polyester Tape <input type="checkbox"/> D 1500 lbs. Polyester Tape <input type="checkbox"/> E 1800 lbs. Polyester Tape <input type="checkbox"/> G 200 lbs. Polyester Tape <input type="checkbox"/> J 2500 lbs. Polyester Tape <input type="checkbox"/> K 400 lbs. Detectable Poly Tape 22 Ga <input type="checkbox"/> T 1250 lbs. Poly Metric Tape <input type="checkbox"/> V 1250 lbs. Detectable Poly Tape 22 Ga						
<input type="checkbox"/> 2 None - Corr	<input type="checkbox"/> 26 SIDR 11.5																											
<input type="checkbox"/> 4 SCH 40	<input type="checkbox"/> 27 SIDR 11.5 True																											
<input type="checkbox"/> 5 SCH 80	<input type="checkbox"/> 29 SIDR 15																											
<input type="checkbox"/> 6 SDR 11	<input type="checkbox"/> 34 SIDR 7																											
<input type="checkbox"/> 9 SDR 13.5	<input type="checkbox"/> 36 SIDR 9																											
<input type="checkbox"/> 13 SDR 15.5	<input type="checkbox"/> 37 SIDR 9 True																											
<input type="checkbox"/> 14 SDR 17	<input type="checkbox"/> 42 TC-7-A																											
<input type="checkbox"/> 16 SDR 21	<input type="checkbox"/> 45 True 11																											
<input type="checkbox"/> 22 SDR 7	<input type="checkbox"/> 46 True 9																											
<input type="checkbox"/> 24 SDR 9																												
2. SIZE <input type="checkbox"/> 2 1/2" <input type="checkbox"/> 3 3/4" <input type="checkbox"/> 5 1" <input type="checkbox"/> 6 1-1/4" <input type="checkbox"/> 9 1-1/2" <input type="checkbox"/> 13 2" <input type="checkbox"/> 14 2-1/2" <input type="checkbox"/> 15 3" <input type="checkbox"/> 16 4" <input type="checkbox"/> 17 4.75" <input type="checkbox"/> 18 5" <input type="checkbox"/> 22 6" <input type="checkbox"/> 23 7" <input type="checkbox"/> 24 8" <input type="checkbox"/> 25 10" <input type="checkbox"/> 26 12" <input type="checkbox"/> 27 14" <input type="checkbox"/> 28 16"	5. OPTIONS <input type="checkbox"/> N Standard/No Options <input type="checkbox"/> B Supplied Cable <input type="checkbox"/> D Lube Duct <input type="checkbox"/> E Slit - Corr <input type="checkbox"/> F Toneable/18G <input type="checkbox"/> G Toneable/22G	6. REEL SPLITS <input type="checkbox"/> 1 1-Way Single <input type="checkbox"/> 2 2-Part Segmented <input type="checkbox"/> 3 3-Part Segmented <input type="checkbox"/> 4 4-Part Segmented <input type="checkbox"/> 5 2-Way Parallel <input type="checkbox"/> 6 3-Way Parallel <input type="checkbox"/> 7 4-Way Parallel <input type="checkbox"/> 12 2-Way Compарт <input type="checkbox"/> 13 3-Way Compарт <input type="checkbox"/> 14 4-Way Compарт	10. Quantity <table style="width:100%; border: 1px solid black;"> <tr> <td style="width:80%; height: 30px;"></td> <td>Total Length Feet</td> </tr> <tr> <td style="width:80%; height: 30px;"></td> <td>Max Reel Size</td> </tr> </table>		Total Length Feet		Max Reel Size																					
	Total Length Feet																											
	Max Reel Size																											
3. CONFIGURATION <input type="checkbox"/> B Smooth Out/Ribbed In <input type="checkbox"/> C Smooth Out/Smooth In <input type="checkbox"/> D Corrugated	7. COLOR <table style="width:100%;"> <tr> <td><input type="checkbox"/> A Black</td> <td><input type="checkbox"/> P Co-Ex Blue</td> </tr> <tr> <td><input type="checkbox"/> B Blue</td> <td><input type="checkbox"/> R Co-Ex Brown</td> </tr> <tr> <td><input type="checkbox"/> C Brown</td> <td><input type="checkbox"/> S Co-Ex Buff</td> </tr> <tr> <td><input type="checkbox"/> D Buff</td> <td><input type="checkbox"/> T Co-Ex Gray</td> </tr> <tr> <td><input type="checkbox"/> E Gray</td> <td><input type="checkbox"/> V Co-Ex Green</td> </tr> <tr> <td><input type="checkbox"/> F Green</td> <td><input type="checkbox"/> W Co-Ex Lilac</td> </tr> <tr> <td><input type="checkbox"/> G Lilac</td> <td><input type="checkbox"/> X Co-Ex Lt. Green</td> </tr> <tr> <td><input type="checkbox"/> H Lt. Green</td> <td><input type="checkbox"/> Y Co-Ex Orange</td> </tr> <tr> <td><input type="checkbox"/> J Orange</td> <td><input type="checkbox"/> Z Co-Ex Red</td> </tr> <tr> <td><input type="checkbox"/> K Red</td> <td><input type="checkbox"/> AA Co-Ex Terra</td> </tr> <tr> <td><input type="checkbox"/> L Terra Cotta</td> <td><input type="checkbox"/> BB Co-Ex White</td> </tr> <tr> <td><input type="checkbox"/> M White</td> <td><input type="checkbox"/> CC Co-Ex Yellow</td> </tr> <tr> <td><input type="checkbox"/> N Yellow</td> <td></td> </tr> </table> <p style="text-align: center;">(available in Solidwall 1" - 2")</p>	<input type="checkbox"/> A Black	<input type="checkbox"/> P Co-Ex Blue	<input type="checkbox"/> B Blue	<input type="checkbox"/> R Co-Ex Brown	<input type="checkbox"/> C Brown	<input type="checkbox"/> S Co-Ex Buff	<input type="checkbox"/> D Buff	<input type="checkbox"/> T Co-Ex Gray	<input type="checkbox"/> E Gray	<input type="checkbox"/> V Co-Ex Green	<input type="checkbox"/> F Green	<input type="checkbox"/> W Co-Ex Lilac	<input type="checkbox"/> G Lilac	<input type="checkbox"/> X Co-Ex Lt. Green	<input type="checkbox"/> H Lt. Green	<input type="checkbox"/> Y Co-Ex Orange	<input type="checkbox"/> J Orange	<input type="checkbox"/> Z Co-Ex Red	<input type="checkbox"/> K Red	<input type="checkbox"/> AA Co-Ex Terra	<input type="checkbox"/> L Terra Cotta	<input type="checkbox"/> BB Co-Ex White	<input type="checkbox"/> M White	<input type="checkbox"/> CC Co-Ex Yellow	<input type="checkbox"/> N Yellow		Target Price (if Avail.) _____ Project Stage Bid/Buy _____ Competitors _____ Carlton Quote # _____ Pricing Specialist _____
<input type="checkbox"/> A Black	<input type="checkbox"/> P Co-Ex Blue																											
<input type="checkbox"/> B Blue	<input type="checkbox"/> R Co-Ex Brown																											
<input type="checkbox"/> C Brown	<input type="checkbox"/> S Co-Ex Buff																											
<input type="checkbox"/> D Buff	<input type="checkbox"/> T Co-Ex Gray																											
<input type="checkbox"/> E Gray	<input type="checkbox"/> V Co-Ex Green																											
<input type="checkbox"/> F Green	<input type="checkbox"/> W Co-Ex Lilac																											
<input type="checkbox"/> G Lilac	<input type="checkbox"/> X Co-Ex Lt. Green																											
<input type="checkbox"/> H Lt. Green	<input type="checkbox"/> Y Co-Ex Orange																											
<input type="checkbox"/> J Orange	<input type="checkbox"/> Z Co-Ex Red																											
<input type="checkbox"/> K Red	<input type="checkbox"/> AA Co-Ex Terra																											
<input type="checkbox"/> L Terra Cotta	<input type="checkbox"/> BB Co-Ex White																											
<input type="checkbox"/> M White	<input type="checkbox"/> CC Co-Ex Yellow																											
<input type="checkbox"/> N Yellow																												
	8. STRIPE <table style="width:100%;"> <tr> <td><input type="checkbox"/> NN NONE</td> <td><input type="checkbox"/> 3G 3 Lilac Stripes</td> </tr> <tr> <td><input type="checkbox"/> 3A 3 Black Stripes</td> <td><input type="checkbox"/> 3H 3 Lt. Green</td> </tr> <tr> <td><input type="checkbox"/> 3B 3 Blue Stripes</td> <td><input type="checkbox"/> 3J 3 Orange Stripes</td> </tr> <tr> <td><input type="checkbox"/> 3C 3 Brown Stripes</td> <td><input type="checkbox"/> 3K 3 Red Stripes</td> </tr> <tr> <td><input type="checkbox"/> 3D 3 Buff Stripes</td> <td><input type="checkbox"/> 3L 3 Terra Cotta Stripes</td> </tr> <tr> <td><input type="checkbox"/> 3E 3 Gray Stripes</td> <td><input type="checkbox"/> 3M 3 White Stripes</td> </tr> <tr> <td><input type="checkbox"/> 3F 3 Green Stripes</td> <td><input type="checkbox"/> 3N 3 Yellow Stripes</td> </tr> </table> <p style="text-align: center;">(Single Stripe only on Toneable)</p>	<input type="checkbox"/> NN NONE	<input type="checkbox"/> 3G 3 Lilac Stripes	<input type="checkbox"/> 3A 3 Black Stripes	<input type="checkbox"/> 3H 3 Lt. Green	<input type="checkbox"/> 3B 3 Blue Stripes	<input type="checkbox"/> 3J 3 Orange Stripes	<input type="checkbox"/> 3C 3 Brown Stripes	<input type="checkbox"/> 3K 3 Red Stripes	<input type="checkbox"/> 3D 3 Buff Stripes	<input type="checkbox"/> 3L 3 Terra Cotta Stripes	<input type="checkbox"/> 3E 3 Gray Stripes	<input type="checkbox"/> 3M 3 White Stripes	<input type="checkbox"/> 3F 3 Green Stripes	<input type="checkbox"/> 3N 3 Yellow Stripes	Minimum Custom Run Quantities: <table style="width:100%;"> <tr> <td style="width:60%;">1/2" - 2"</td> <td>1000 Ft.</td> </tr> <tr> <td>2 1/2" - 6"</td> <td>600 Ft.</td> </tr> <tr> <td>8"</td> <td>560 Ft.</td> </tr> <tr> <td>10" - 14"</td> <td>480 Ft.</td> </tr> <tr> <td>16"</td> <td>360 Ft.</td> </tr> </table>	1/2" - 2"	1000 Ft.	2 1/2" - 6"	600 Ft.	8"	560 Ft.	10" - 14"	480 Ft.	16"	360 Ft.		
<input type="checkbox"/> NN NONE	<input type="checkbox"/> 3G 3 Lilac Stripes																											
<input type="checkbox"/> 3A 3 Black Stripes	<input type="checkbox"/> 3H 3 Lt. Green																											
<input type="checkbox"/> 3B 3 Blue Stripes	<input type="checkbox"/> 3J 3 Orange Stripes																											
<input type="checkbox"/> 3C 3 Brown Stripes	<input type="checkbox"/> 3K 3 Red Stripes																											
<input type="checkbox"/> 3D 3 Buff Stripes	<input type="checkbox"/> 3L 3 Terra Cotta Stripes																											
<input type="checkbox"/> 3E 3 Gray Stripes	<input type="checkbox"/> 3M 3 White Stripes																											
<input type="checkbox"/> 3F 3 Green Stripes	<input type="checkbox"/> 3N 3 Yellow Stripes																											
1/2" - 2"	1000 Ft.																											
2 1/2" - 6"	600 Ft.																											
8"	560 Ft.																											
10" - 14"	480 Ft.																											
16"	360 Ft.																											

Fax completed Quote Request to your Local Carlton Representative
 Visit www.carlon.com to locate a Carlton Representative

- Terms: Net 30 days unless other terms previously agreed.
- Pricing valid for 30 days unless otherwise specified.
- Freight quoted F.O.B., origin (freight additional) from plant specified.
- Custom product non-cancelable 24 hours after order acknowledgement or production has started.

Carlton® High Density Polyethylene Manufacturing Locations



Carlton®
LAMSON & SESSIONS