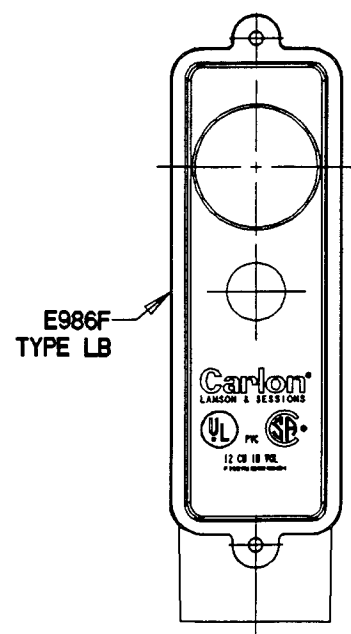
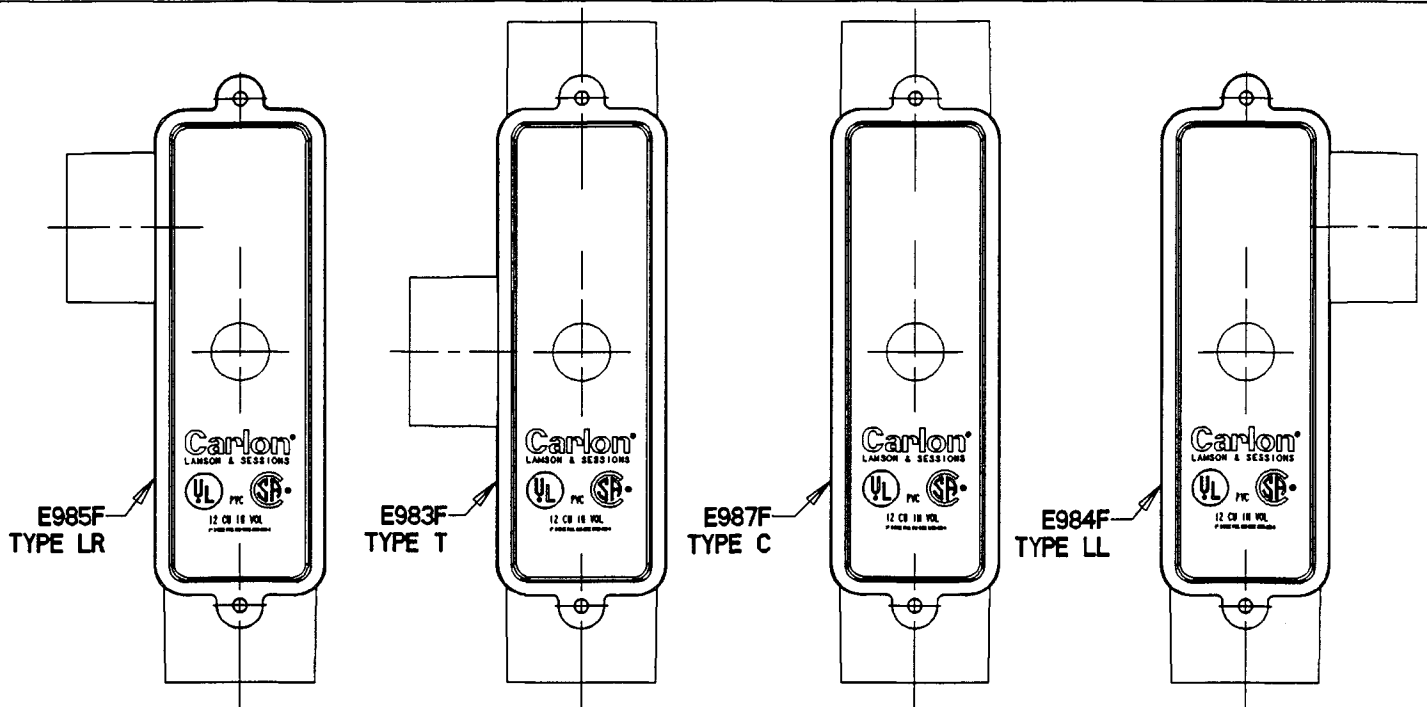


This information provided by:

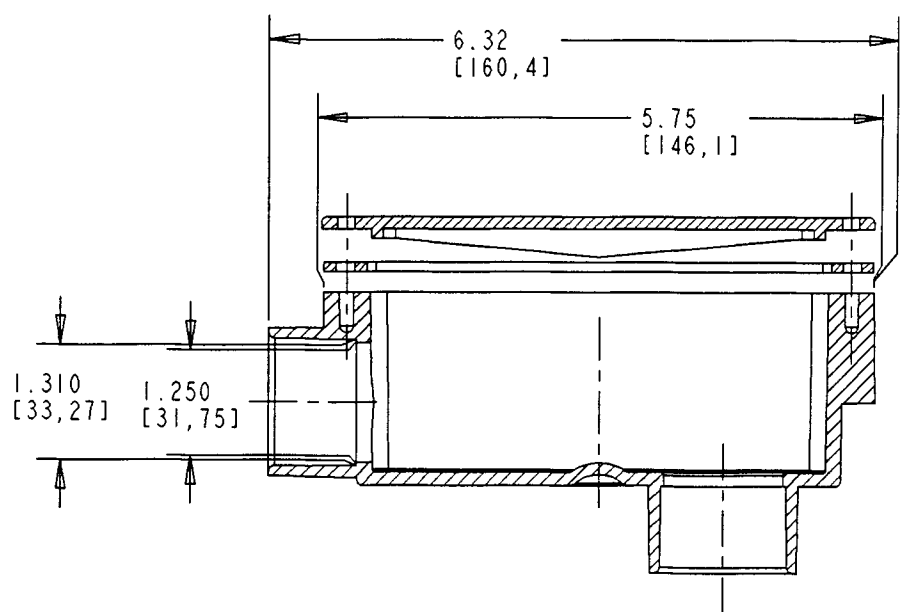
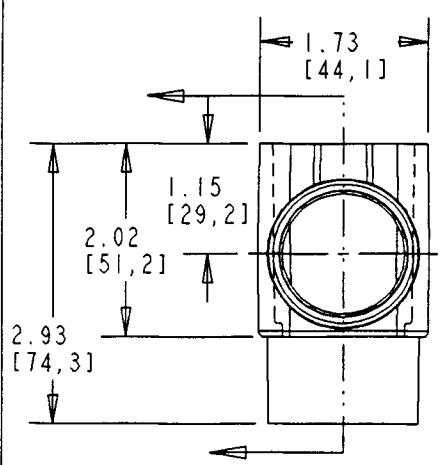


Gross Automation
www.grossautomation.com

Call Toll Free:
800-349-5827

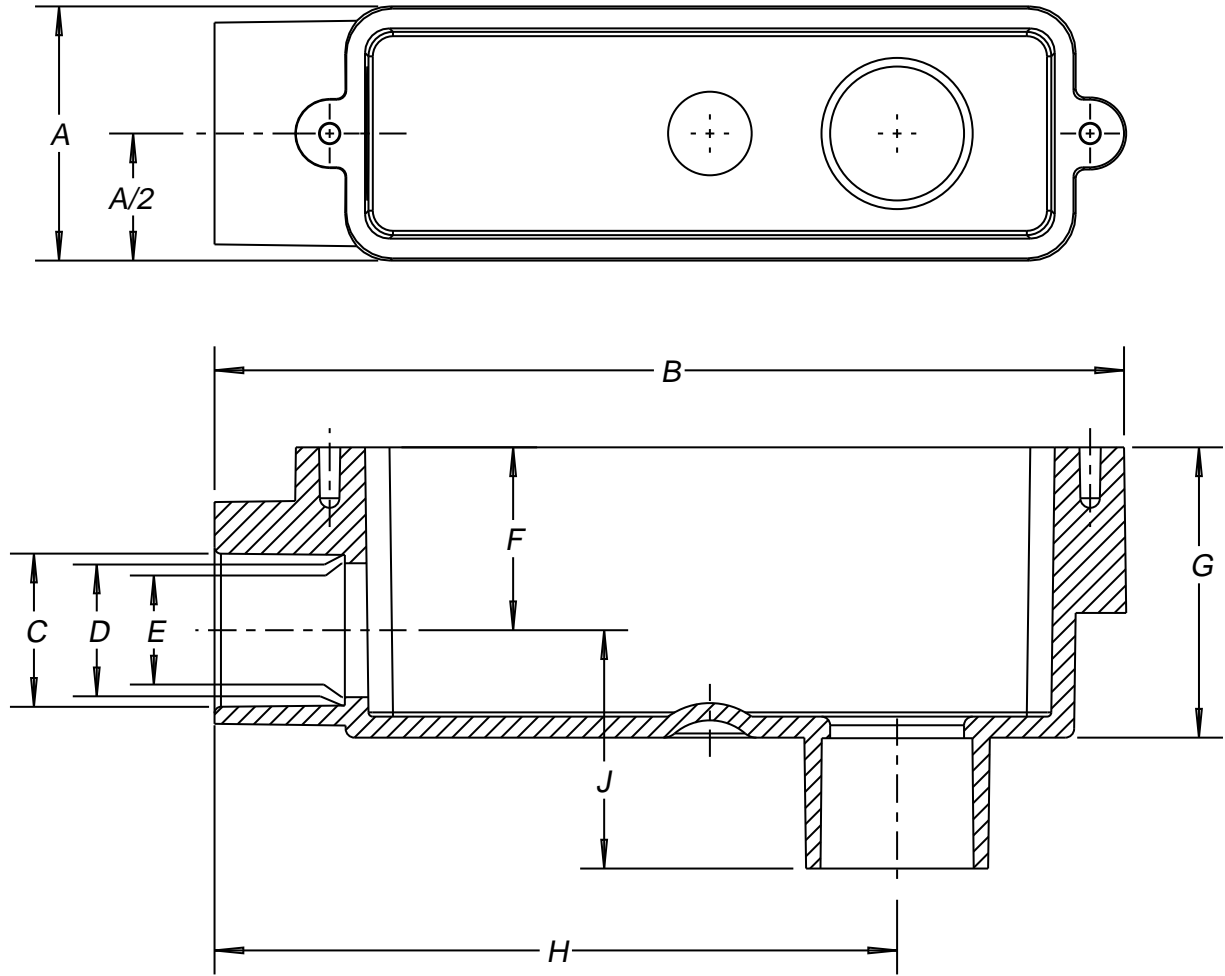


- NOTES:**
- FITTING ASSEMBLIES INCLUDE:
 - (1) FITTING BODY
 - (1) GASKET
 - (1) COVER
 - (2) SCREWS
 - PORT DIMENSIONS ARE TYPICAL REGARDLESS OF POSITION
 - DIMENSIONS ARE IN INCHES[MILLIMETERS].



| | | | | | | | |
|-------------------|--|--|--|------------|---------|-------------|------|
| TITLE | | ACCESS FITTINGS - 1" | | DRN | DATE | PART NO: | |
| LAMSON & SESSIONS | | ALL DRAWINGS ARE THE PROPERTY OF LAMSON & SESSIONS AND SHALL NOT BE REPRODUCED IN ANY FORM WITHOUT LAMSON & SESSIONS' APPROVAL AND ARE TO BE PROMPTLY RETURNED UPON REQUEST. | | RG | 6/10/02 | AS NOTED | |
| | | | | APP | DATE | DRAWING NO: | REV. |
| | | | | <i>WJZ</i> | | AC04179 | |

Carlton®



| PART NO | SIZE | A | B | C | D | E | F | G | H | J |
|---------|--------|----------------|-----------------|----------------|----------------|----------------|----------------|----------------|-----------------|----------------|
| E986D | 1/2" | 1.35 [34.3] | 4.29 [109.1] | 0.85 [21.6] | 0.84 [21.3] | 0.76 [19.3] | 0.82 [21.0] | 1.50 [38.1] | 3.00 [76.2] | 1.31 [33.3] |
| E986E | 3/4" | 1.77 [45.5] | 6.32 [160.5] | 1.06 [26.9] | 1.05 [26.7] | 0.93 [23.6] | 1.27 [32.3] | 2.02 [51.3] | 4.74 [120.4] | 1.76 [44.7] |
| E986F | 1" | 1.77 [45.5] | 6.32 [160.5] | 1.33 [33.8] | 1.31 [33.3] | 1.25 [31.8] | 1.15 [29.2] | 2.02 [51.3] | 4.74 [120.4] | 1.76 [44.7] |
| E986G | 1 1/4" | 2.53 [64.3] | 7.95 [201.9] | 1.68 [42.7] | 1.66 [42.2] | 1.58 [40.1] | 1.64 [41.7] | 2.74 [69.6] | 6.00 [152.4] | 2.28 [57.9] |
| E986H | 1 1/2" | 2.53 [64.3] | 7.95 [201.9] | 1.92 [48.8] | 1.89 [48.0] | 1.81 [46.0] | 1.50 [38.1] | 2.74 [69.6] | 6.00 [152.4] | 2.28 [57.9] |
| E986J | 2" | 3.16 [80.3] | 9.56 [242.9] | 2.39 [60.7] | 2.37 [60.2] | 2.28 [57.9] | 1.92 [48.8] | 3.45 [87.6] | 7.24 [183.9] | 2.57 [65.8] |

NOTES:

- 1.) PRODUCT, AS SOLD, INCLUDES A GASKET AND COVER.
- 2.) DIMENSIONS ARE: INCH [mm].

| | | | | |
|------------------------------------|---|--------------------------|----------------------|------|
| TITLE: ACCESS FITTINGS - TYPE "LB" | | DRN. DATE DPR 4-13-07 | PART NO.: SEE CHART | |
| LAMSON & SESSIONS | ALL DRAWINGS ARE THE PROPERTY OF LAMSON & SESSIONS AND SHALL NOT BE REPRODUCED IN ANY FORM WITHOUT LAMSON & SESSIONS' APPROVAL AND ARE TO BE PROMPTLY RETURNED UPON REQUEST | APP. DATE EGH 4-13-07 | DRAWING NO.: AC05071 | REV. |