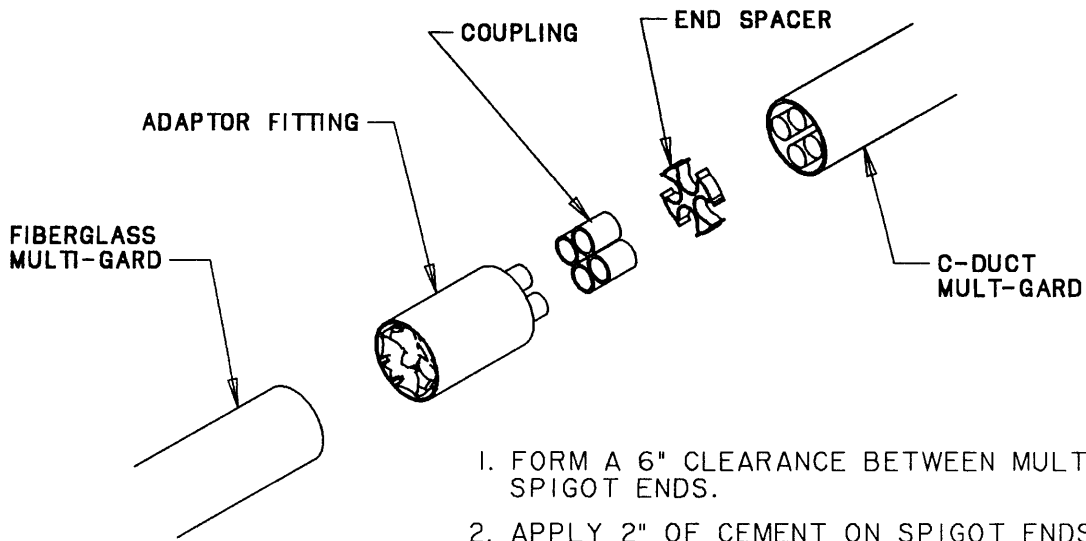


This information provided by:

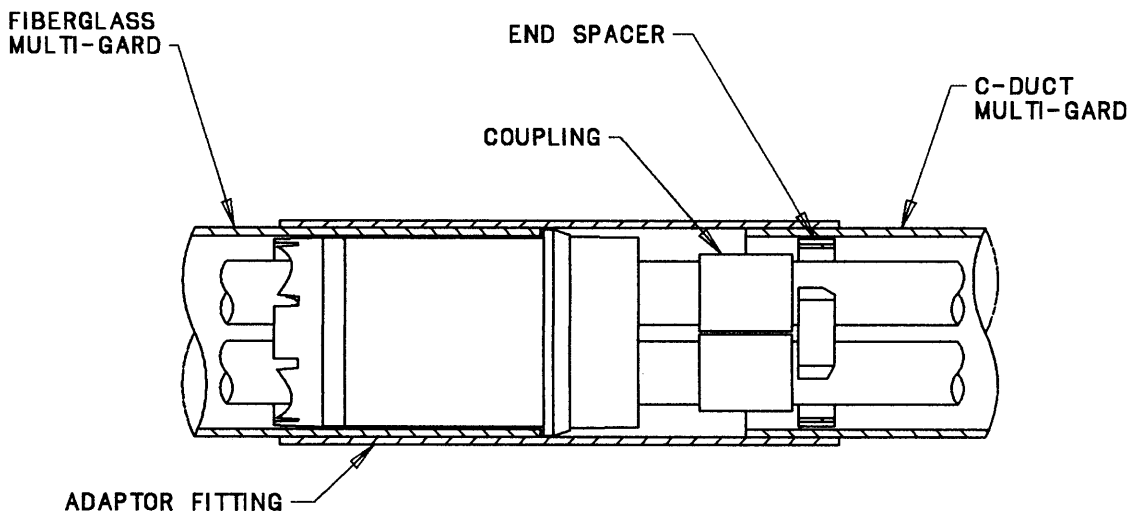


Gross Automation
www.grossautomation.com

Call Toll Free:
800-349-5827



1. FORM A 6" CLEARANCE BETWEEN MULTI-GARD SPIGOT ENDS.
2. APPLY 2" OF CEMENT ON SPIGOT ENDS OF ADAPTOR FITTING. PRESS COUPLINGS ON SPIGOTS.
3. INSERT END SPACER INTO MULTI-GARD SPIGOT END (C-DUCT).
4. SOLVENT CEMENT 2" ON OUTSIDE OF C-DUCT AND INSERT ADAPTOR FITTING.
5. APPLY 2" OF EPOXY TO OUTSIDE OF FIBERGLASS MULTI-GARD END AND INSERT INTO GASKETED END OF ADAPTOR FITTING.



CATALOG NUMBER	
M	A
	3 = 3-WAY INNER DUCT
	4 = 4-WAY INNER DUCT
	S = STD WALL FIBERGLASS
	H = HEAVY WALL FIBERGLASS
	B = BULLET RES FIBERGLASS
	X = TYPE C OUTER DUCT
	F = TYPE 40 OUTER DUCT
	D = TYPE 80 OUTER DUCT

TITLE: ADAPTOR FITTING, FIBERGLASS TO C-DUCT

DRN. DATE
TCAT 10-06-92

PART NO:
SEE CHART

APP. DATE

DRAWING NO:
AC01182

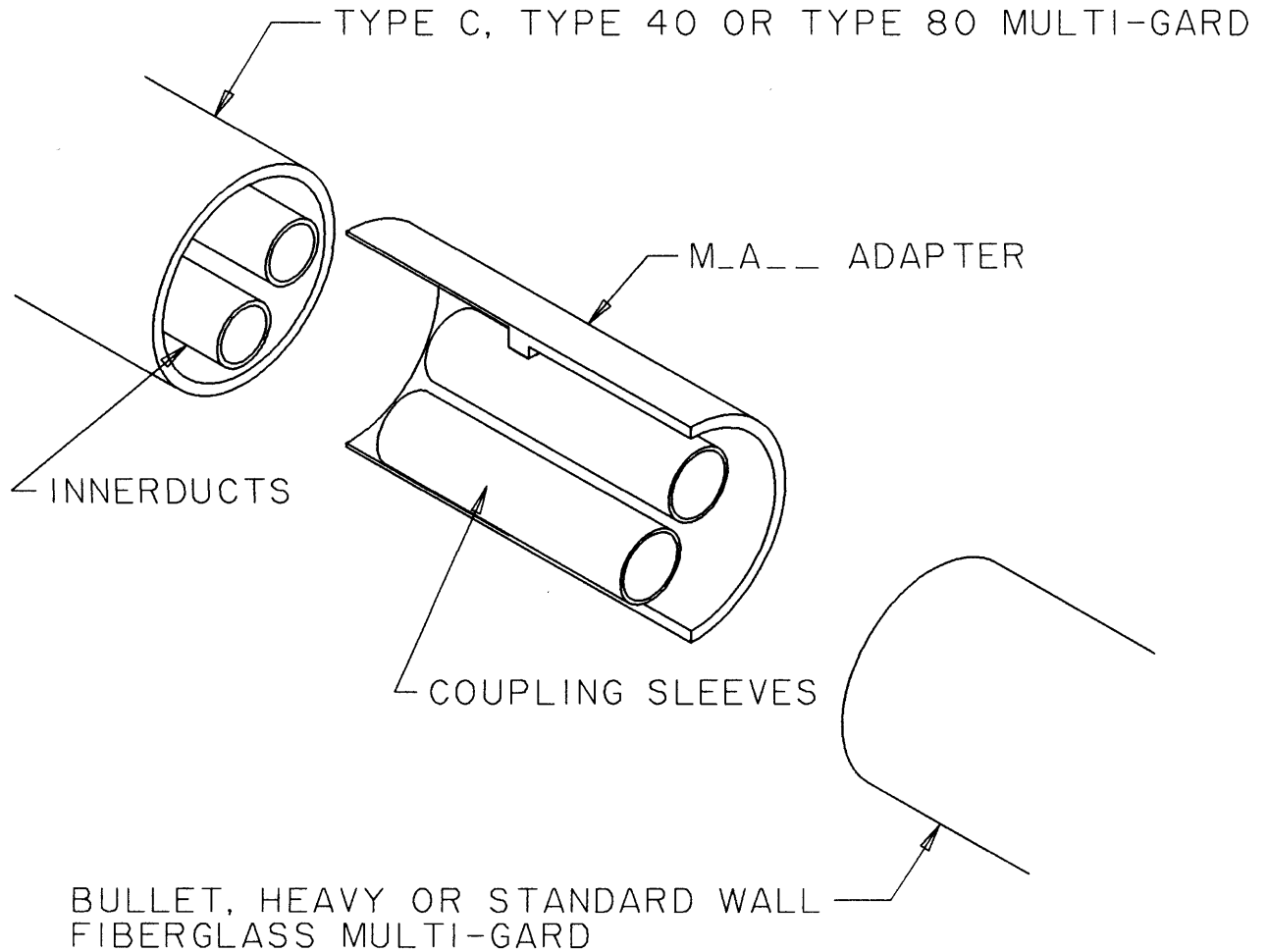
REV.
A

Carlton
A LAMSON & SESSIONS COMPANY

ALL DRAWINGS ARE THE PROPERTY OF CARLTON AND SHALL NOT BE REPRODUCED IN ANY FORM WITHOUT CARLTON'S APPROVAL AND ARE TO BE PROMPTLY RETURNED UPON REQUEST.

CATALOG NUMBER

M	A	3 = 3-WAY INNER DUCT
		4 = 4-WAY INNER DUCT
		S = STANDARD WALL
		H = HEAVY WALL
		B = BULLET RESISTANT
		X = TYPE C OUTER DUCT
		F = TYPE 40 OUTER DUCT
		D = TYPE 80 OUTER DUCT



NOTE:

1. SOLVENT CEMENT COUPLING SLEEVES TO INNERDUCTS.
2. ONLY (2) DUCTS ARE SHOWN, FOR CLARITY.

TITLE:	FIBERGLASS ADAPTER	DRN.	DATE	PART NO:	SEE CHART
		DJK	11-20-97		
LAMSON & SESSIONS	ALL DRAWINGS ARE THE PROPERTY OF LAMSON & SESSIONS AND SHALL NOT BE REPRODUCED IN ANY FORM WITHOUT LAMSON & SESSIONS' APPROVAL AND APPROVED BY PROJECT MANAGER.	APP.	DATE	DRAWING NO:	AC03303
Gross Automation (877) 268-3700 · www.carlonsales.com · sales@grossautomation.com					REV.