

Carlton® PV-Mold® Nonmetallic Pole Riser System

Carlton PV-Mold is a nonmetallic pole riser system designed to protect communications power cable installed on poles.

Features:

- Meets or exceeds requirements outlined in the National Electric Safety Code (NESC).
- Designed in accordance with NEMA TC-19 specifications.
- Ultraviolet, cold temperature and corrosive atmosphere resistant.
- Schedule 40 wall meets Schedule 80 PVC conduit impact requirements per NEMA TC-19.
- No grounding required.
- Belled end fits over each added section or conduit.
- Flame retardant.
- Requires no maintenance.
- PV-Mold acts as an insulator against electrical shock.
- Interchangeable parts and accessories to match the needs of specific requirements.

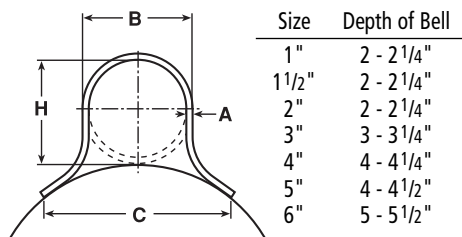


Steel U-Guard requires grounding strapping and does not have belled ends.



PV-Mold has belled ends, flanged design and does not require grounding.

Flanged Overall Length
10 Feet, Including Bell

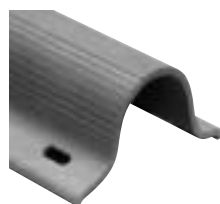


Slots are 1/2" from side to side, and allow for expansion and contraction.

Slot Dimensions: for sizes 2" through 6" are 5/16" wide, 3/4" long.

Slot Dimensions: for 1" and 1 1/2" are 3/16" wide, 3/4" long.

Slot Spacing: 18" from center, beginning 6" from end.



Standard Duty

Part No.	Size	Std. Ctn. Qty.	Std. Ctn. Wt. (lbs.)	Dimensions				Actual Impact @ 0°C 20 Pound Tup
				A	B	C	H	
59208N	1"	294	1059	0.100"	1 5/8"	2 3/8"	1 5/8"	40 Ft.-Lbs.
59211N	2"	136	726	0.100"	2 3/8"	4 1/2"	2 3/8"	100 Ft.-Lbs.
59213N	3"	66	761	0.150"	3 1/2"	6"	3 1/2"	110 Ft.-Lbs.
59215N	4"	65	910	0.150"	4 1/2"	6 1/2"	4 1/2"	110 Ft.-Lbs.
59216N	5"	30	515	0.150"	5 1/2"	7 1/2"	5 1/2"	110 Ft.-Lbs.

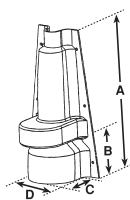
Heavy Duty Schedule 40

59010N	1 1/2"	200	1142	0.145"	1 29/32"	3 1/2"	1 29/32"	100 Ft.-Lbs.
59011N	2"	136	1214	0.154"	2 3/8"	4 1/2"	2 3/8"	150 Ft.-Lbs.
59013N	3"	66	937	0.216"	3 1/2"	6"	3 9/32"	150 Ft.-Lbs.
59015N	4"	65	1621	0.237"	4 1/2"	6 1/2"	4 1/2"	260 Ft.-Lbs.
59016N	5"	30	870	0.258"	5 1/2"	7 1/2"	5 1/2"	260 Ft.-Lbs.
59017N	6"	30	1160	0.280"	6 5/8"	8 3/4"	6 5/8"	260 Ft.-Lbs.

Extra Heavy Duty Schedule 80

59411N	2"	136	1549	0.218"	2 3/8"	4 1/2"	2 3/8"	300 Ft.-Lbs.
59413N	3"	66	1495	0.300"	3 1/2"	6"	3 1/2"	525 Ft.-Lbs.

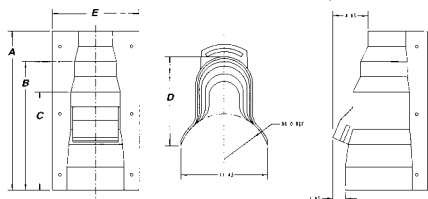
PV-Mold® System Accessories



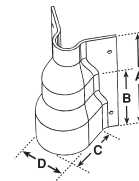
Polyethylene Vented Boots and Adapters

Vented Boots

Part No.	Size	Dimensions				Std.Ctn. Qty.	Std.Ctn. Wt. (lbs.)
		A	B	C	D		
E938JR	2" x 6"	20.50	5.38	6.14	6.88	4	13.58
E938NT	4" x 8"	21.00	15.00	11.31	9.76	4	16.67

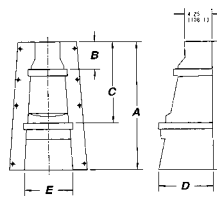


Part No.	Size	Dimensions					Std.Ctn. Qty.	Std.Ctn. Wt. (lbs.)
		A	B	C	D	E		
E938NRR	4" x 6"	20.87	16.57	12.87	11.68	11.43	1	7



Adapters

Part No.	Size	Dimensions				Std.Ctn. Qty.	Std.Ctn. Wt. (lbs.)
		A	B	C	D		
E939JN	2" x 4"	11.00	6.75	5.88	5.07	8	10.57
E939NR	4" x 6"	11.00	6.75	7.08	7.13	6	8.00



Part No.	Size	Dimensions					Std.Ctn. Qty.	Std.Ctn. Wt. (lbs.)
		A	B	C	D	E		
E939NRT	4" x 6"	19.75	4.25	12.50	8.50	7.40	1	5

Note:

1. A field cut may be needed to accommodate different boot or adapter to Carlon U-Mold size combinations.
2. Recommendation: 2 sets of mounting holes per boot/fitting. To add mounting holes, use a 3/8" drill bit and drill out where needed.
3. When 3" or smaller conduit is being used, it's recommended that the bottom (largest section) of the boot or adapter section be buried 2" to 3" below ground surface.

Couplings



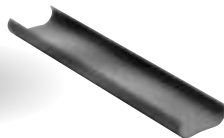
Part No.	Size/Description	Std. Ctn. Qty.	Std. Ctn. Wt. (lbs.)
E966JJ	2" x 2" Sch. 80 Double Belled Coupling	10	9

Duct to Riser Fitting



Part No.	Size	Std. Ctn. Qty.	Std. Ctn. Wt. (lbs.)
E939NL	4" x 3"	15	5.6
E939N	4" x 4"	15	5.3

Backing Plate



Part No.	Size	Dimensions			Std. Ctn. Qty.	Std. Ctn. Wt. (lbs.)
		A	B	C		
59111	2"	1/16"	13/16"	2 1/8"	1	1.2
59113	3"	1/16"	15/16"	3 1/8"	1	1.5
59115	4"	1/16"	15/16"	4 1/8"	1	3.0
59116	5"	1/16"	1 3/4"	5 1/4"	1	3.1
59117	6"	1/16"	1 5/8"	6 1/16"	1	4.2

Installation is easy with PV-Mold pole risers:

1. Install ventilator or duct to riser fittings at the base of the pole.
2. Nail backing plate sections to the surface of the pole. Three nail holes are provided in each section. Place the "U" sections over the cable and backing plate, with belled end at the bottom, and attach using 1/4" lag bolts.

